

KDM1A (1E5) Mouse mAb

db6007

Package : 50µL 100µL

Product Name : KDM1A (1E5) Mouse mAb**Cat.No.:** db6007**Synonyms** : KDM1A; AOF2; KDM1; KIAA0601; LSD1; Lysine-specific histone demethylase 1A; BRAF35-HDAC complex protein BHC110; Flavin-containing amine oxidase domain-containing protein 2**Application** : WB, ICC/IF, IP**Reactivity** : Human, Monkey**Host species** : Mouse**Background**

Histone demethylase that demethylates both 'Lys-4' (H3K4me) and 'Lys-9' (H3K9me) of histone H3, thereby acting as a coactivator or a corepressor, depending on the context. Acts by oxidizing the substrate by FAD to generate the corresponding imine that is subsequently hydrolyzed. Acts as a corepressor by mediating demethylation of H3K4me, a specific tag for epigenetic transcriptional activation. Demethylates both mono- (H3K4me1) and di-methylated (H3K4me2) H3K4me. May play a role in the repression of neuronal genes.

Immunogen

Purified recombinant human KDM1/LSD1 protein fragments expressed in E.coli

Gene ID

23028

Swiss Prot

O60341

Synonyms

KDM1A; AOF2; KDM1; KIAA0601; LSD1; Lysine-specific histone demethylase 1A; BRAF35-HDAC complex protein BHC110; Flavin-containing amine oxidase domain-containing protein 2

Reactivity

Human, Monkey

Application

WB, ICC/IF, IP

Recommended dilution

WB: 1:500-1:1000
ICC/IF: 1:50-1:200
IP: 1:20

Calculated MW

93 kDa

Observed MW

110 kDa

Host species

Mouse

Clonality

Monoclonal

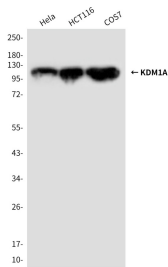
Clonality No.

1E5-H2

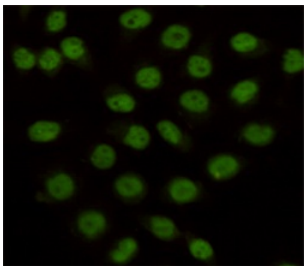
Isotype

IgG1

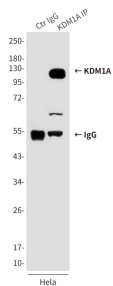
Purity	Affinity Purification
Conjugation	Un-conjugated
Storage Stability	Store at -20°C. Supplied in PBS, 50% Glycerol(pH 7.3), 0.02% sodium azide and 0.5% BSA . Stable for 12 months from date of receipt.



Western blot analysis of KDM1/LSD1 in HeLa, HCT116 and COS7 lysates using KDM1/LSD1 antibody.



Immunocytochemistry analysis of KDM1A (1E5) in HeLa using KDM1/LSD1 antibody.



Immunoprecipitation analysis of KDM1A (1E5) in HeLa lysates using KDM1/LSD1 antibody.