

PP1C alpha (1C11) Mouse mAb

db6027

Package : 50µL 100µL

Product Name : PP1C alpha (1C11) Mouse mAb**Cat.No.:** db6027**Synonyms** : PP-1A; PPP1A; PP1alpha**Application** : WB, IHC-Fr, IHC-P, ICC/IF**Reactivity** : Human**Host species** : Mouse**Background**

Protein phosphatase that associates with over 200 regulatory proteins to form highly specific holoenzymes which dephosphorylate hundreds of biological targets. Protein phosphatase 1 (PP1) is essential for cell division, and participates in the regulation of glycogen metabolism, muscle contractility and protein synthesis. Involved in regulation of ionic conductances and long-term synaptic plasticity.

Immunogen

Purified recombinant human PPP1A protein fragments expressed in E.coli

Gene ID

5499

Swiss Prot

P62136

Synonyms

PP-1A; PPP1A; PP1alpha

Reactivity

Human

Application

WB, IHC-Fr, IHC-P, ICC/IF

Recommended dilution

WB: 1:500-1:1000

IHC: 1:50-1:100

ICC/IF: 1:50-1:200

Calculated MW

38 kDa

Observed MW

38 kDa

Host species

Mouse

Clonality

Monoclonal

Clonality No.

1C11-C10-H5-E9

Isotype

IgG1

Purity

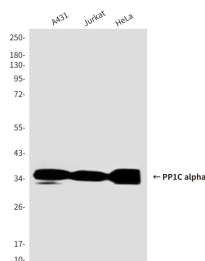
Affinity Purification

Conjugation

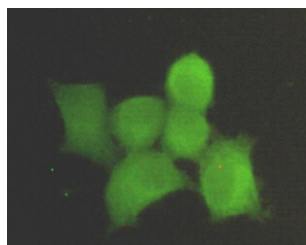
Un-conjugated

Storage Stability

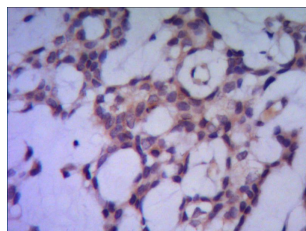
Store at -20°C. Supplied in PBS, 50% Glycerol(pH 7.3), 0.02% sodium azide and 0.5% BSA .
Stable for 12 months from date of receipt.



Western blot analysis of PPP1A in A431, Jurkat and Hela whole lysates using PPP1A antibody.



Immunocytochemistry analysis of PP1C alpha (1C11) in Hela using PPP1A antibody.



Immunohistochemistry analysis of paraffin-embedded Human breast cancer using PPP1A antibody. High-pressure and temperature Sodium Citrate pH 6.0 was used for antigen retrieval.