

Smad5 (4B10) Mouse mAb

db6059

Package : 50µL 100µL

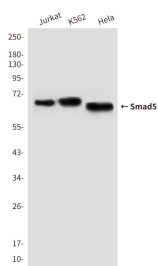
Product Name : Smad5 (4B10) Mouse mAb**Cat.No.:** db6059

Synonyms : DKFZp781C1895; DKFZp781O1323; Dwfc; hSmad 5; hSmad5; JV5 1; JV5-1; MAD homolog 5; MAD mothers against decapentaplegic homolog 5; MAD; mothers against decapentaplegic homolog 5; MADH 5; MADH5; Mothers against decapentaplegic homolog 5; Mothers against DPP homolog 5; MusMLP; SMA and MAD related protein 5; SMAD 5; SMAD family member 5; SMAD mothers against DPP homolog 5; Smad5; Smad5; SMAD5_HUMAN

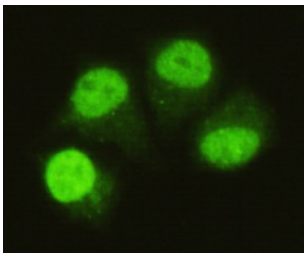
Application : WB, ICC/IF, FC**Reactivity** : Human**Host species** : Mouse

Background	Transcriptional modulator activated by BMP (bone morphogenetic proteins) type 1 receptor kinase. SMAD5 is a receptor-regulated SMAD (R-SMAD).
Immunogen	Purified recombinant human SMAD5 (C-terminus) protein fragments expressed in E.coli
Gene ID	4090
Swiss Prot	Q99717
Synonyms	DKFZp781C1895; DKFZp781O1323; Dwfc; hSmad 5; hSmad5; JV5 1; JV5-1; MAD homolog 5; MAD mothers against decapentaplegic homolog 5; MAD; mothers against decapentaplegic homolog 5; MADH 5; MADH5; Mothers against decapentaplegic homolog 5; Mothers against DPP homolog 5; MusMLP; SMA and MAD related protein 5; SMAD 5; SMAD family member 5; SMAD mothers against DPP homolog 5; Smad5; Smad5; SMAD5_HUMAN
Reactivity	Human
Application	WB, ICC/IF, FC
Recommended dilution	WB: 1:500-1:1000 ICC/IF: 1:50-1:200 FC: 1:50-1:100
Calculated MW	52 kDa
Observed MW	60 kDa
Host species	Mouse
Clonality	Monoclonal
Clonality No.	4B10-B10-B6

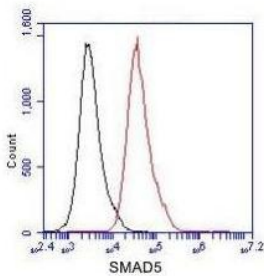
Isotype	IgG1
Purity	Affinity Purification
Conjugation	Un-conjugated
Storage Stability	Store at -20°C. Supplied in PBS, 50% Glycerol(pH 7.3), 0.02% sodium azide and 0.5% BSA . Stable for 12 months from date of receipt.



Western blot analysis of SMAD5 (Cterminus) in HeLa, Jurkat and K562 lysates using SMAD5 (Cterminus) antibody.



Immunocytochemistry analysis of Smad5 in HeLa cells using Smad5 antibody.



Flow Cytometry analysis of Jurkat cells stained with SMAD5 (red). Black line histogram represents the isotype control, normal mouse IgG.