

## PP1C gamma (2F2A3) Mouse mAb

db6068

Package : 50µL 100µL

**Product Name** : PP1C gamma (2F2A3) Mouse mAb**Cat.No.:** db6068

**Synonyms** : PP 1G; PP-1G; PP1G; PP1G\_HUMAN; PP1gamma; PPP 1G; PPP1CC; PPP1CC protein; PPP1G; Protein phosphatase 1 catalytic subunit gamma isoform; Protein phosphatase 1C catalytic subunit; Protein phosphatase 1C subunit; Protein phosphatase 2C gamma isoform; Serine/threonine phosphatase 1 gamma; Serine/threonine protein phosphatase PP1 gamma catalytic subunit; Serine/threonine-protein phosphatase PP1-gamma catalytic subunit

**Application** : WB**Reactivity** : Human**Host species** : Mouse**Background**

The protein encoded by this gene belongs to the protein phosphatase family, PP1 subfamily. PP1 is an ubiquitous serine/threonine phosphatase that regulates many cellular processes, including cell division. It is expressed in mammalian cells as three closely related isoforms, alpha, beta/delta and gamma, which have distinct localization patterns. This gene encodes the gamma isozyme. Alternatively spliced transcript variants encoding different isoforms have been found for this gene.

**Immunogen**

Purified recombinant human PP1C protein fragments expressed in E.coli

**Gene ID**

5501

**Swiss Prot**

P36873

**Synonyms**

PP 1G; PP-1G; PP1G; PP1G\_HUMAN; PP1gamma; PPP 1G; PPP1CC; PPP1CC protein; PPP1G; Protein phosphatase 1 catalytic subunit gamma isoform; Protein phosphatase 1C catalytic subunit; Protein phosphatase 1C subunit; Protein phosphatase 2C gamma isoform; Serine/threonine phosphatase 1 gamma; Serine/threonine protein phosphatase PP1 gamma catalytic subunit; Serine/threonine-protein phosphatase PP1-gamma catalytic subunit

**Reactivity**

Human

**Application**

WB

**Recommended dilution**

WB: 1:500-1:1000

**Calculated MW**

37 kDa

**Observed MW**

37 kDa

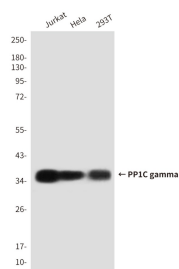
**Host species**

Mouse

**Clonality**

Monoclonal

Clonality No.	2F2-A3-H10
Isotype	IgG2b
Purity	Affinity Purification
Conjugation	Un-conjugated
Storage Stability	Store at -20°C. Supplied in PBS, 50% Glycerol(pH 7.3), 0.02% sodium azide and 0.5% BSA . Stable for 12 months from date of receipt.



Western blot analysis of PP1C in HeLa, 293T and Jurkat lysates using PP1C antibody.