

AMPK beta 1 (1A7) Mouse mAb

db6183

Package : 50µL 100µL

Product Name : AMPK beta 1 (1A7) Mouse mAb**Cat.No.:** db6183**Synonyms** : 5"-AMP-activated protein kinase subunit beta-1; AMP-activated; noncatalytic; beta-1; AMPK; AMPK beta 1 chain; AMPK subunit beta-1; AMPK-BETA-1; AMPKb; HAMPKb; PRKAB1**Application** : WB, ICC/IF, IP, IHC-Fr, IHC-P**Reactivity** : Human, Mouse, Rat, Monkey**Host species** : Mouse**Background**

AMP-activated protein kinase (AMPK) is highly conserved from yeast to plants and animals and plays a key role in the regulation of energy homeostasis. AMPK is a heterotrimeric complex composed of a catalytic α subunit and regulatory β and γ subunits, each of which is encoded by two or three distinct genes (α 1, 2; β 1, 2; γ 1, 2, 3).

Immunogen

Purified recombinant human AMPK beta 1 protein fragments expressed in E.coli

Gene ID

5564

Swiss Prot

Q9Y478

Synonyms

5"-AMP-activated protein kinase subunit beta-1; AMP-activated; noncatalytic; beta-1; AMPK; AMPK beta 1 chain; AMPK subunit beta-1; AMPK-BETA-1; AMPKb; HAMPKb; PRKAB1

Reactivity

Human, Mouse, Rat, Monkey

Application

WB, ICC/IF, IP, IHC-Fr, IHC-P

Recommended dilution

WB: 1:500-1:1000

IHC: 1:50-1:100

ICC/IF: 1:50-1:200

IP: 1:20

Calculated MW

30 kDa

Observed MW

38 kDa

Host species

Mouse

Clonality

Monoclonal

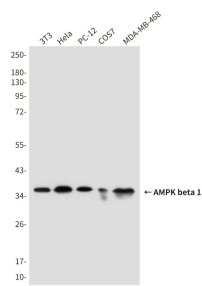
Clonality No.

1A7-E11-E9

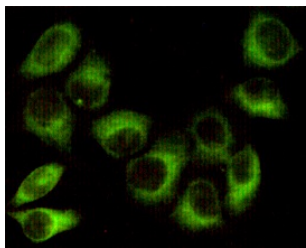
Isotype

IgG2a

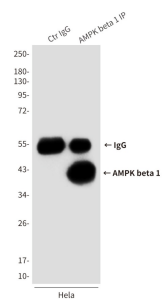
Purity	Affinity Purification
Conjugation	Un-conjugated
Storage Stability	Store at -20°C. Supplied in PBS, 50% Glycerol(pH 7.3), 0.02% sodium azide and 0.5% BSA . Stable for 12 months from date of receipt.



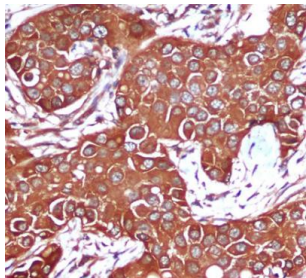
Western blot analysis of AMPK beta 1 in 3T3, HeLa, PC-12, COS7 and MDA-MB-468 lysates using AMPK beta 1 antibody.



Immunocytochemistry analysis of AMPK beta 1 (1A7) in HeLa using AMPK beta 1 antibody.



Immunoprecipitation analysis of AMPK beta 1 (1A7) in HeLa lysates using AMPK beta 1 antibody.



Immunohistochemistry analysis of paraffin-embedded Breast cancer using AMPK beta 1 antibody. High-pressure and temperature Sodium Citrate pH 6.0 was used for antigen retrieval.