

**HtrA2/Omi (8G11) Mouse mAb**

db6215

Package : 50µL 100µL

**Product Name** : HtrA2/Omi (8G11) Mouse mAb**Cat.No.:** db6215**Synonyms** : OMI; PARK13; PRSS25**Application** : WB, IP**Reactivity** : Human**Host species** : Mouse**Background**

High temperature requirement protein A2 (HtrA2)/Omi is a serine protease with homology to the E. coli HtrA protein (DegP) and is thought to be involved in apoptosis and stress-induced degradation of misfolded proteins. While HtrA2 was originally identified to be present in either the nucleus or endoplasmic reticulum, subsequent studies have shown that it localizes in mitochondria and is released during apoptosis.

**Immunogen**

Recombinant human HtrA2/Omi protein

**Gene ID**

27429

**Swiss Prot**

O43464

**Synonyms**

OMI; PARK13; PRSS25

**Reactivity**

Human

**Application**

WB, IP

**Recommended dilution**

WB: 1:500-1:1000

IP: 1:20

**Calculated MW**

49 kDa

**Observed MW**

37 kDa

**Host species**

Mouse

**Clonality**

Monoclonal

**Clonality No.**

8G11-4B8-4F10-G5

**Isotype**

IgG1

**Purity**

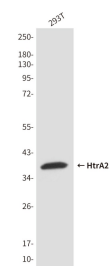
Affinity Purification

**Conjugation**

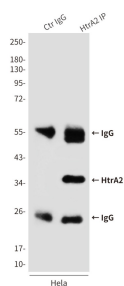
Un-conjugated

Storage Stability

Store at -20°C. Supplied in PBS, 50% Glycerol(pH 7.3), 0.02% sodium azide and 0.5% BSA .  
Stable for 12 months from date of receipt.



Western blot analysis of HtrA2/Omi in 293T lysates using HtrA2/Omi antibody.



Immunoprecipitation analysis of HtrA2 (8G11) in HeLa lysates using HtrA2/Omi antibody.