

**STAT1 (6C2) Mouse mAb**

db6216

Package : 50µL 100µL

**Product Name** : STAT1 (6C2) Mouse mAb**Cat.No.:** db6216**Synonyms** : STAT1; Signal transducer and activator of transcription 1-alpha/beta; Transcription factor ISGF-3 components p91/p84**Application** : WB, IP**Reactivity** : Human, Monkey**Host species** : Mouse**Background**

Signal transducer and transcription activator that mediates cellular responses to interferons (IFNs),cytokine KITLG/SCF and other cytokines and other growth factors.Following type I IFN (IFN-alpha and IFN-beta) binding to cell surface receptors,signaling via protein kinases leads to activation of Jak kinases (TYK2 and JAK1) and to tyrosine phosphorylation of STAT1 and STAT2.The phosphorylated STATs dimerize and associate with ISGF3G/IRF-9 to form a complex termed ISGF3 transcription factor,that enters the nucleus.ISGF3 binds to the IFN stimulated response element (ISRE) to activate the transcription of IFN-stimulated genes (ISG),which drive the cell in an antiviral state.In response to type II IFN (IFN-gamma),STAT1 is tyrosine- and serine-phosphorylated.It then forms a homodimer termed IFN-gamma-activated factor (GAF),migrates into the nucleus and binds to the IFN gamma activated sequence (GAS) to drive the expression of the target genes,inducing a cellular antiviral state.Becomes activated in response to KITLG/SCF and KIT signaling.May mediate cellular responses to activated FGFR1,FGFR2,FGFR3 and FGFR4.

**Immunogen**

Purified recombinant human STAT1 protein fragments expressed in E.coli

**Gene ID**

6772

**Swiss Prot**

P42224

**Synonyms**

STAT1; Signal transducer and activator of transcription 1-alpha/beta; Transcription factor ISGF-3 components p91/p84

**Reactivity**

Human, Monkey

**Application**

WB, IP

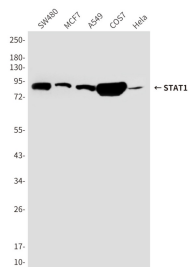
**Recommended dilution**WB: 1:500-1:1000  
IP: 1:20**Calculated MW**

87 kDa

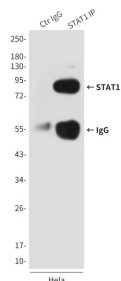
**Observed MW**

91 kDa

Host species	Mouse
Clonality	Monoclonal
Clonality No.	6C2-F7-D12
Isotype	IgG2a
Purity	Affinity Purification
Conjugation	Un-conjugated
Storage Stability	Store at -20°C. Supplied in PBS, 50% Glycerol(pH 7.3), 0.02% sodium azide and 0.5% BSA . Stable for 12 months from date of receipt.



Western blot analysis of STAT1 in HeLa, MCF-7, COS7, SW480 and A549 lysates using STAT1 antibody.



Immunoprecipitation analysis of STAT1 (6C2) in HeLa lysates using STAT1 antibody.