

Lamin A/C Mouse mAb

db6230

Package : 50µL 100µL

Product Name : Lamin A/C Mouse mAb**Cat.No.:** db6230**Synonyms** : FPL; IDC; LFP; CDDC; EMD2; FPLD; HGPS; LDP1; LMN1; LMNC; PRO1; CDCD1; CMD1A; FPLD2; LMNL1; CMT2B1; LGMD1B**Application** : WB**Reactivity** : Human, Mouse, Rat**Host species** : Mouse**Background**

Lamins are components of the nuclear lamina, a fibrous layer on the nucleoplasmic side of the innernuclear membrane, which is thought to provide a framework for the nuclear envelope and may also interact withchromatin. Lamin A and C are present in equal amounts in the lamina of mammals. Plays an important role innuclear assembly, chromatin organization, nuclear membrane and telomere dynamics. Required for normal developmentof peripheral nervous system and skeletal muscle and for muscle satellite cell proliferation. Required forosteoblastogenesis and bone formation. Also prevents fat infiltration of muscle and bone marrow, helping tomaintain the volume and strength of skeletal muscle and bone Prelamin-A/C can accelerate smooth muscle cell senescence. It acts to disrupt mitosis and induce DNA damage in vascular smooth muscle cells (VSMCs), leading to mitotic failure, genomic instability, and prematuresenescence.

Immunogen

Purified recombinant human LMNA protein fragments expressed in E.coli

Gene ID

4000

Swiss Prot

P02545

Synonyms

FPL; IDC; LFP; CDDC; EMD2; FPLD; HGPS; LDP1; LMN1; LMNC; PRO1; CDCD1; CMD1A; FPLD2; LMNL1; CMT2B1; LGMD1B

Reactivity

Human, Mouse, Rat

Application

WB

Recommended dilution

WB: 1:500-1:1000

Calculated MW

74 kDa

Observed MW

74 kDa

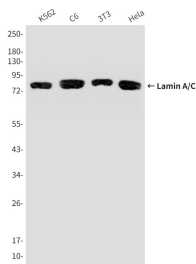
Host species

Mouse

Clonality

Monoclonal

Clonality No.	3D6-F4-B7
Isotype	IgG2a
Purity	Affinity Purification
Conjugation	Un-conjugated
Storage Stability	Store at -20°C. Supplied in PBS, 50% Glycerol(pH 7.3), 0.02% sodium azide and 0.5% BSA . Stable for 12 months from date of receipt.



Western blot analysis of Lamin A in K562, C6, 3T3 and HeLa lysates using Lamin A antibody.