

CREB (1E9) Mouse mAb

db6332

Package : 50µL 100µL

Product Name : CREB (1E9) Mouse mAb**Cat.No.:** db6332**Synonyms** : CREB; CREB-1; CREB1**Application** : WB**Reactivity** : Human, Rat**Host species** : Mouse**Background**

This protein binds the cAMP response element (CRE), a sequence present in many viral and cellular promoters. CREB stimulates transcription on binding to the CRE. Transcription activation is enhanced by the TORC coactivators which act independently of Ser-133 phosphorylation. Implicated in synchronization of circadian rhythmicity.

Immunogen

Purified recombinant human CREB protein fragments expressed in E.coli

Gene ID

1385

Swiss Prot

P16220

Synonyms

CREB; CREB-1; CREB1

Reactivity

Human, Rat

Application

WB

Recommended dilution

WB: 1:500-1:1000

Calculated MW

35 kDa

Observed MW

43 kDa

Host species

Mouse

Clonality

Monoclonal

Clonality No.

1E9-G10-C3-H6

Isotype

IgG1

Purity

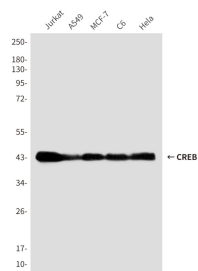
Affinity Purification

Conjugation

Un-conjugated

Storage Stability

Store at -20°C. Supplied in PBS, 50% Glycerol(pH 7.3), 0.02% sodium azide and 0.5% BSA .
Stable for 12 months from date of receipt.



Western blot analysis of CREB in Jurkat, A549, MCF-7, C6 and HeLa lysates using CREB antibody.