

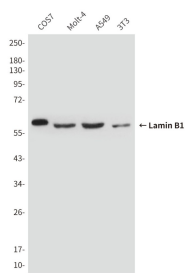
## Lamin B1 (5G8) Mouse mAb

db6275

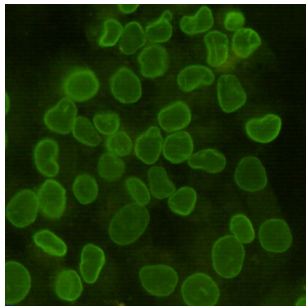
Package : 50μL 100μL

**Product Name** : Lamin B1 (5G8) Mouse mAb**Cat.No.:** db6275**Synonyms** : LMN; ADLD; LMN2; LMNB**Application** : WB, ICC/IF**Reactivity** : Human, Mouse, Monkey**Host species** : Mouse

<b>Background</b>	Lamins are components of the nuclear lamina, a fibrous layer on the nucleoplasmic side of the inner nuclear membrane, which is thought to provide a framework for the nuclear envelope and may also interact with chromatin.
<b>Immunogen</b>	Recombinant human Lamin B1 protein
<b>Gene ID</b>	4001
<b>Swiss Prot</b>	P20700
<b>Synonyms</b>	LMN; ADLD; LMN2; LMNB
<b>Reactivity</b>	Human, Mouse, Monkey
<b>Application</b>	WB, ICC/IF
<b>Recommended dilution</b>	WB: 1:1000 ICC/IF: 1:100-1:200
<b>Calculated MW</b>	66 kDa
<b>Observed MW</b>	66 kDa
<b>Host species</b>	Mouse
<b>Clonality</b>	Monoclonal
<b>Clonality No.</b>	5G8-D3-H7
<b>Isotype</b>	IgG2b
<b>Purity</b>	Affinity Purification
<b>Conjugation</b>	Un-conjugated
<b>Storage Stability</b>	Store at -20°C. Supplied in PBS, 50% Glycerol(pH 7.3), 0.02% sodium azide and 0.5% BSA . Stable for 12 months from date of receipt.



Western blot analysis of Lamin B1 in COS7, Molt4, A549 and 3T3 lysates using Lamin B1 antibody.



Immunocytochemistry analysis of Lamin B1 in Hela cells using Lamin B1 antibody.