

## ERK1/2 (4F3) Mouse mAb

db6298

Package : 50µL 100µL

**Product Name** : ERK1/2 (4F3) Mouse mAb**Cat.No.:** db6298**Synonyms** : MAPK3; ERK1; ERT2; ERK-1; PRKM3; P44ERK1; P44MAPK; HS44KDAP; HUMKER1A; p44-ERK1; p44-MAPK; MAPK1; ERK; p38; p40; p41; ERK2; ERT1; ERK-2; MAPK2; PRKM1; PRKM2; P42MAPK; p41mapk; p42-MAPK**Application** : WB**Reactivity** : Human, Mouse, Rat**Host species** : Mouse**Background**

Serine/threonine kinase which acts as an essential component of the MAP kinase signal transduction pathway. MAPK1/ERK2 and MAPK3/ERK1 are the 2 MAPKs which play an important role in the MAPK/ERK cascade. They participate also in a signaling cascade initiated by activated KIT and KITLG/SCF. Depending on the cellular context, the MAPK/ERK cascade mediates diverse biological functions such as cell growth, adhesion, survival and differentiation through the regulation of transcription, translation, cytoskeletal rearrangements.

**Immunogen**

Human p44 MAPK (Erk1) synthetic peptide conjugated to KLH

**Gene ID**

5595, 5594

**Swiss Prot**

P27361, P28482

**Synonyms**

MAPK3; ERK1; ERT2; ERK-1; PRKM3; P44ERK1; P44MAPK; HS44KDAP; HUMKER1A; p44-ERK1; p44-MAPK; MAPK1; ERK; p38; p40; p41; ERK2; ERT1; ERK-2; MAPK2; PRKM1; PRKM2; P42MAPK; p41mapk; p42-MAPK

**Reactivity**

Human, Mouse, Rat

**Application**

WB

**Recommended dilution**

WB: 1:500-1:1000

**Calculated MW**

44,42 kDa

**Observed MW**

42,44 kDa

**Host species**

Mouse

**Clonality**

Monoclonal

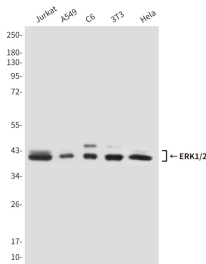
**Clonality No.**

4F3-A10-E7

**Isotype**

IgG1

Purity	Affinity Purification
Conjugation	Un-conjugated
Storage Stability	Store at -20°C. Supplied in PBS, 50% Glycerol(pH 7.3), 0.02% sodium azide and 0.5% BSA . Stable for 12 months from date of receipt.



Western blot analysis of ERK1/2 (4F3) in Jurkat, A549, C6, 3T3 and Hela lysates using p44/42 MAPK (Erk1/2) antibody.