

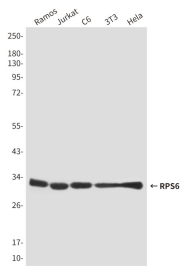
RPS6 (7B10) Mouse mAb

db6306

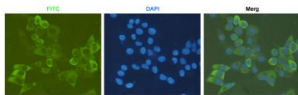
Package : 50µL 100µL

Product Name : RPS6 (7B10) Mouse mAb**Cat.No.:** db6306**Synonyms** : RPS6; OK/SW-cl2; 40S ribosomal protein S6; Phosphoprotein NP33**Application** : WB, ICC/IF, IP**Reactivity** : Human, Mouse, Rat, Monkey**Host species** : Mouse

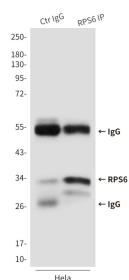
Background	May play an important role in controlling cell growth and proliferation through the selective translation of particular classes of mRNA.
Immunogen	Synthetic peptide derived from human S6 Ribosomal Protein
Gene ID	6194
Swiss Prot	P62753
Synonyms	RPS6; OK/SW-cl2; 40S ribosomal protein S6; Phosphoprotein NP33
Reactivity	Human, Mouse, Rat, Monkey
Application	WB, ICC/IF, IP
Recommended dilution	WB: 1:500-1:1000 ICC/IF: 1:50-1:200 IP: 1:20
Calculated MW	29 kDa
Observed MW	32 kDa
Host species	Mouse
Clonality	Monoclonal
Clonality No.	7B10-E11-E11
Isotype	IgG1
Purity	Affinity Purification
Conjugation	Un-conjugated
Storage Stability	Store at -20°C. Supplied in PBS, 50% Glycerol(pH 7.3), 0.02% sodium azide and 0.5% BSA . Stable for 12 months from date of receipt.



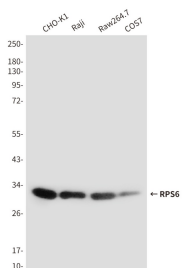
Western blot analysis of S6 Ribosomal Protein in Ramos, Jurkat, C6, 3T3 and HeLa lysates using S6 Ribosomal Protein antibody.



Immunocytochemistry analysis of RPS6 (7B10) in HeLa using S6 Ribosomal Protein antibody.



Immunoprecipitation analysis of RPS6 (7B10) in HeLa lysates using S6 Ribosomal Protein antibody.



Western blot analysis of RPS6 (7B10) in CHO-K1, Raji, Raw264.7 and COS7 lysates using RPS6 (7B10) antibody