

## KDM1A (1B2) Mouse mAb

db6394

Package : 50µL 100µL

**Product Name** : KDM1A (1B2) Mouse mAb**Cat.No.:** db6394**Synonyms** : KDM1A; AOF2; KDM1; KIAA0601; LSD1; Lysine-specific histone demethylase 1A; BRAF35-HDAC complex protein BHC110; Flavin-containing amine oxidase domain-containing protein 2**Application** : WB**Reactivity** : Human, Mouse, Monkey**Host species** : Mouse**Background**

The amine oxidase domain 2 (AOF2) gene encodes a nuclear protein (LSD1, ~95kDa) containing a Swirm domain, a FAD-binding motif, and an amine oxidase domain. This protein is a component of several histone deacetylase complexes, though it silences genes by functioning as a histone demethylase. LSD1 is a chromatin-modifying enzyme, which serve as a docking module for the stabilization of the associated corepressor complex (es) on chromatin.

**Immunogen**

Purified recombinant fragment of human LSD1 expressed in E. Coli

**Gene ID**

23028

**Swiss Prot**

O60341

**Synonyms**

KDM1A; AOF2; KDM1; KIAA0601; LSD1; Lysine-specific histone demethylase 1A; BRAF35-HDAC complex protein BHC110; Flavin-containing amine oxidase domain-containing protein 2

**Reactivity**

Human, Mouse, Monkey

**Application**

WB

**Recommended dilution**

WB: 1:500-1:1000

**Calculated MW**

93 kDa

**Observed MW**

93 kDa

**Host species**

Mouse

**Clonality**

Monoclonal

**Clonality No.**

1B2-E5-G3

**Isotype**

IgG1

**Purity**

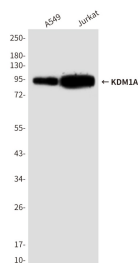
Affinity Purification

**Conjugation**

Un-conjugated

## Storage Stability

Store at -20°C. Supplied in PBS, 50% Glycerol(pH 7.3), 0.02% sodium azide and 0.5% BSA .  
Stable for 12 months from date of receipt.



Western blot analysis of KDM1 / LSD1 in A549 and Jurkat lysates using KDM1 / LSD1 antibody.