

LYRIC (2E4) Mouse mAb

db6403

Package : 50μL 100μL

Product Name : LYRIC (2E4) Mouse mAb**Cat.No.:** db6403**Synonyms** : 3D3; AEG1; LYRIC; MTDH**Application** : WB, IHC-P, FC**Reactivity** : Human**Host species** : Mouse**Background**

Metadherin (Metastasis adhesion protein), also known as MTDH, LYsine-Rlch CEACAM1 co-isolated (LYRIC), is a novel protein that localizes with the tight junction proteins ZO-1 and occludin in polarized epithelial cells. At the tight junction, it acts not as a structural component, but is rather recruited during the maturation of the tight junction complex. Metadherin is overexpressed in breast cancer tissue and breast tumor xenografts, while much lower levels are expressed in normal breast tissue. Metadherin binds to lung vasculature, one of the four common sites of breast cancer metastasis, through a C-terminal segment in the extracellular domain; blocking this lung-homing domain with antibodies or inhibiting metadherin with siRNA has been reported to inhibit breast cancer metastasis.

Immunogen

Purified recombinant fragment of human Metadherin expressed in E. Coli

Gene ID

92140

Swiss Prot

Q86UE4

Synonyms

3D3; AEG1; LYRIC; MTDH

Reactivity

Human

Application

WB, IHC-P, FC

Recommended dilution

WB: 1:500-1:1000

IHC: 1:50-1:100

FC: 1:50-1:100

Calculated MW

64 kDa

Observed MW

64 kDa

Host species

Mouse

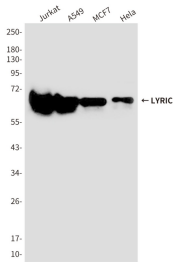
Clonality

Monoclonal

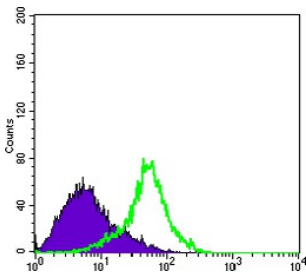
Clonality No.

2E4-D8-D11

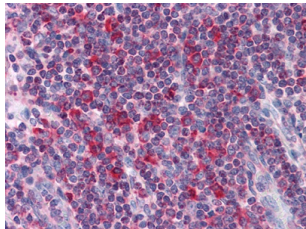
Isotype	IgG1
Purity	Affinity Purification
Conjugation	Un-conjugated
Storage Stability	Store at -20°C. Supplied in PBS, 50% Glycerol(pH 7.3), 0.02% sodium azide and 0.5% BSA . Stable for 12 months from date of receipt.



Western blot analysis of Lyric/Metadherin in Jurkat, A549, MCF-7 and HeLa lysates using Lyric/Metadherin antibody.



Flow cytometry analysis of HeLa cells stained with Metadherin antibody(green) and negative control(purple).



Immunohistochemistry analysis of paraffin-embedded Human Liver tissues using Metadherin antibody.High-pressure and temperature Sodium Citrate pH 6.0 was used for antigen retrieval.