

Synaptophysin (10C8) Mouse mAb

db6404

Package : 50µL 100µL

Product Name : Synaptophysin (10C8) Mouse mAb**Cat.No.:** db6404**Synonyms** : SYP; Synaptophysin; Major synaptic vesicle protein p38**Application** : WB, IHC-P**Reactivity** : Human, Mouse, Rat**Host species** : Mouse**Background**

Synaptophysin (p38) is an integral membrane protein of small synaptic vesicles in brain and endocrine cells. Synaptophysin contains four transmembrane domains that form a hexameric channel or gap junction-like pore. Synaptophysin binds to the SNARE protein synaptobrevin/VAMP, which prevents the inclusion of synaptobrevin in the synaptic vesicle fusion complex and creates a pool of synaptobrevin for exocytosis when synapse activity increases. Synaptophysin is also responsible for targeting synaptobrevin 2/VAMP2 to synaptic vesicles, a critical component of the fusion complex.

Immunogen

Purified recombinant fragment of SYP expressed in E. Coli

Gene ID

6855

Swiss Prot

P08247

Synonyms

SYP; Synaptophysin; Major synaptic vesicle protein p38

Reactivity

Human, Mouse, Rat

Application

WB, IHC-P

Recommended dilutionWB: 1:500-1:1000
IHC: 1:50-1:100**Calculated MW**

34 kDa

Observed MW

34 kDa

Host species

Mouse

Clonality

Monoclonal

Clonality No.

10C8-10F9-9H9

Isotype

IgG1

Purity

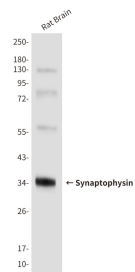
Affinity Purification

Conjugation

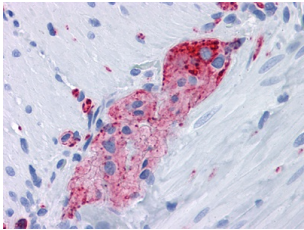
Un-conjugated

Storage Stability

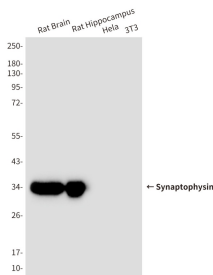
Store at -20°C. Supplied in PBS, 50% Glycerol(pH 7.3), 0.02% sodium azide and 0.5% BSA .
Stable for 12 months from date of receipt.



Western blot analysis of Synaptophysin (10C8) in rat brain lysates using Synaptophysin (10C8) antibody.



Immunohistochemical analysis of paraffin-embedded Human tonsils using Synaptophysin (10C8) antibody.High-pressure and temperature Sodium Citrate pH 6.0 was used for antigen retrieval.



Western blot analysis of Synaptophysin (10C8) in rat Brain, rat Hippocampus, HeLa, 3T3 lysates using Synaptophysin (10C8) antibody