

## MCM2 (2B5) Mouse mAb

db6407

Package : 50μL 100μL

**Product Name** : MCM2 (2B5) Mouse mAb**Cat.No.:** db6407**Synonyms** : MCM2; BM28; CCNL1; CDCL1; KIAA0030; DNA replication licensing factor MCM2; Minichromosome maintenance protein 2 homolog; Nuclear protein BM28**Application** : WB, IHC-Fr, IHC-P, ICC/IF, FC, IP**Reactivity** : Human, Mouse**Host species** : Mouse**Background**

The protein encoded by this gene is one of the highly conserved mini-chromosome maintenance proteins (MCM) that are involved in the initiation of eukaryotic genome replication. The hexameric protein complex formed by MCM proteins is a key component of the pre-replication complex (pre\_RC) and may be involved in the formation of replication forks and in the recruitment of other DNA replication related proteins. This protein forms a complex with MCM4, 6, and 7, and has been shown to regulate the helicase activity of the complex. This protein is phosphorylated, and thus regulated by, protein kinases CDC2 and CDC7.

**Immunogen**

Purified recombinant fragment of human MCM2 expressed in E. Coli

**Gene ID**

4171

**Swiss Prot**

P49736

**Synonyms**

MCM2; BM28; CCNL1; CDCL1; KIAA0030; DNA replication licensing factor MCM2; Minichromosome maintenance protein 2 homolog; Nuclear protein BM28

**Reactivity**

Human, Mouse

**Application**

WB, IHC-Fr, IHC-P, ICC/IF, FC, IP

**Recommended dilution**

WB: 1:500-1:1000  
IHC: 1:50-1:100  
ICC/IF: 1:50-1:200  
IP: 1:20  
FC: 1:50-1:100

**Calculated MW**

102 kDa

**Observed MW**

125 kDa

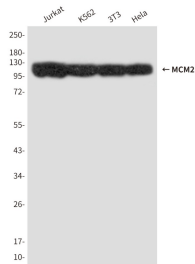
**Host species**

Mouse

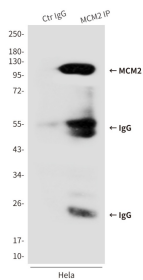
**Clonality**

Monoclonal

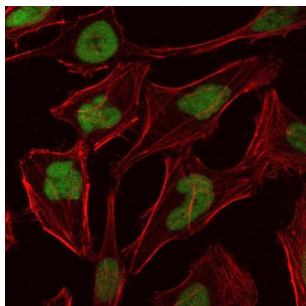
Clonality No.	2B5-H4-A9
Isotype	IgG1
Purity	Affinity Purification
Conjugation	Un-conjugated
Storage Stability	Store at -20°C. Supplied in PBS, 50% Glycerol(pH 7.3), 0.02% sodium azide and 0.5% BSA . Stable for 12 months from date of receipt.



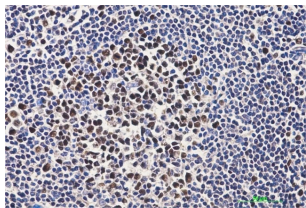
Western blot analysis of MCM2 in Jurkat, K562, 3T3 and Hela lysates using MCM2 antibody.



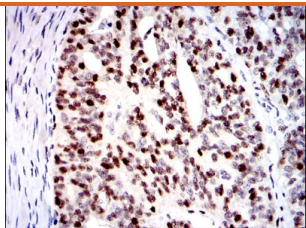
Immunoprecipitation analysis of MCM2 (2B5) in Hela lysates using MCM2 antibody.



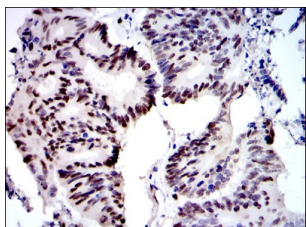
Immunofluorescence analysis of MCM2 (2B5) in Hela cells using MCM2 antibody (green), and DAPI (blue).



Immunohistochemistry analysis of paraffin-embedded Human tonsil tissue using MCM2 (2B5) antibody. High-pressure and temperature Sodium Citrate pH 6.0 was used for antigen retrieval.



Immunohistochemistry analysis of paraffin-embedded ovarian cancer tissues using MCM2 (2B5) antibody. High-pressure and temperature Sodium Citrate pH 6.0 was used for antigen retrieval.



Immunohistochemistry analysis of paraffin-embedded colon cancer tissues using MCM2 antibody. High-pressure and temperature Sodium Citrate pH 6.0 was used for antigen retrieval.