

NSE (4C7) Mouse mAb

db6437

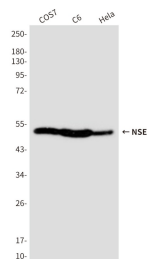
Package : 50µL 100µL

Product Name : NSE (4C7) Mouse mAb**Cat.No.:** db6437**Synonyms** : ENO2; Gamma-enolase; 2-phospho-D-glycerate hydro-lyase; Enolase 2; Neural enolase; Neuron-specific enolase; NSE**Application** : WB, ICC/IF, IHC-P**Reactivity** : Human, Mouse, Rat**Host species** : Mouse

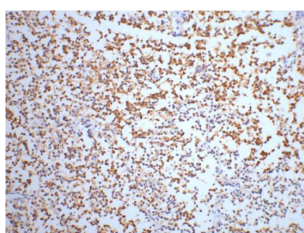
Background	Has neurotrophic and neuroprotective properties on a broad spectrum of central nervous system (CNS) neurons. Binds, in a calcium-dependent manner, to cultured neocortical neurons and promotes cell survival .
Immunogen	Synthetic Peptide of NSE
Gene ID	2026
Swiss Prot	P09104
Synonyms	ENO2; Gamma-enolase; 2-phospho-D-glycerate hydro-lyase; Enolase 2; Neural enolase; Neuron-specific enolase; NSE
Reactivity	Human, Mouse, Rat
Application	WB, ICC/IF, IHC-P
Recommended dilution	WB: 1:500-1:1000 IHC: 1:50-1:100 ICC/IF: 1:50-1:200
Calculated MW	47 kDa
Observed MW	47 kDa
Host species	Mouse
Clonality	Monoclonal
Clonality No.	4C7-4F10-10F9
Isotype	IgG1
Purity	Affinity Purification
Conjugation	Un-conjugated

Storage Stability

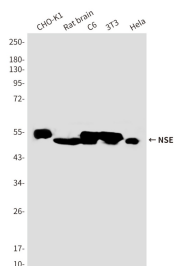
Store at -20°C. Supplied in PBS, 50% Glycerol(pH 7.3), 0.02% sodium azide and 0.5% BSA .
Stable for 12 months from date of receipt.



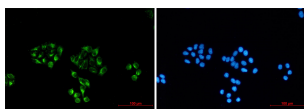
Western blot analysis of Enolase2 in COS7, C6 and HeLa lysates using Enolase2 antibody.



Immunohistochemistry analysis of paraffin-embedded Human small cell carcinoma of lung tissue using NSE antibody. High-pressure and temperature Sodium Citrate pH 6.0 was used for antigen retrieval.



Western blot analysis of NSE (4C7) in Enolase (4C7) in CHO-K1, rat brain, C6, 3T3, HeLa lysates using Enolase (4C7) antibody.



Immunocytochemistry analysis of NSE (4C7) (green) in HeLa using NSE (4C7) antibody, and DAPI (blue)