

beta Actin (10F1) Mouse mAb

db6496

Package : 100µL 500µL 1mL

Product Name : beta Actin (10F1) Mouse mAb

Cat.No.: db6496

Synonyms : ACTIN; ACTB; BETA-ACTIN; beta actin; actin beta

Application : ICC/IF, WB, IHC-Fr, IHC-P

Reactivity : Human, Mouse, Rat, Monkey, Dog, Chicken, Hamster, Rabbit, Insect

Host species : Mouse

Background

Actins are highly conserved proteins that are involved in various types of cell motility and are ubiquitously expressed in all eukaryotic cells. In vertebrates 3 main groups of actin isoforms, alpha, beta and gamma have been identified. The alpha actins are found in muscle tissues and are a major constituent of the contractile apparatus. The beta and gamma actins coexist in most cell types as components of the cytoskeleton and as mediators of internal cell motility.

Immunogen

Synthetic Peptide of β -actin

Gene ID

60

Swiss Prot

P60709

Synonyms

ACTIN; ACTB; BETA-ACTIN; beta actin; actin beta

Reactivity

Human, Mouse, Rat, Monkey, Dog, Chicken, Hamster, Rabbit, Insect

Application

ICC/IF, WB, IHC-Fr, IHC-P

Recommended dilution

WB: 1:5000-1:10000

IHC: 1:50-1:200

ICC/IF: 1:100-1:200

Calculated MW

42 kDa

Observed MW

42 kDa

Host species

Mouse

Clonality

Monoclonal

Clonality No.

10F1-3A3-3B1

Isotype

IgG1

Purity

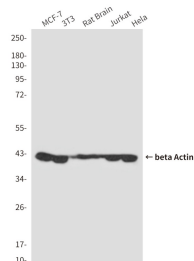
Affinity Purification

Conjugation

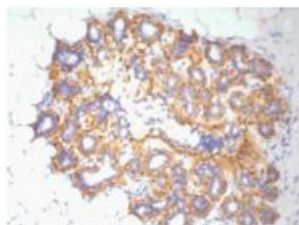
Un-conjugated

Storage Stability

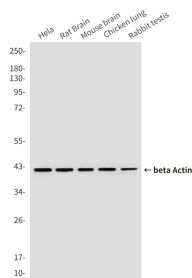
Store at -20°C. Supplied in PBS, 50% Glycerol(pH 7.3), 0.02% sodium azide and 0.5% BSA .
Stable for 12 months from date of receipt.



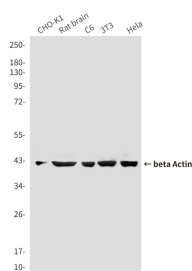
Western blot analysis of beta actin in MCF-7, 3T3, rat Brain, Jurkat and Hela lysates using beta actin antibody.



Immunohistochemistry analysis of paraffin-embedded Human ovary tissue using beta Actin antibody. High-pressure and temperature Sodium Citrate pH 6.0 was used for antigen retrieval.



Western blot analysis of beta Actin in Hela, rat brain, mouse brain, Chicken lung and Rabbit testis using beta Actin (10F1) antibody.



Western blot analysis of β Actin in CHO-K1, rat brain, C6, 3T3, Hela lysates using β Actin (10F1) antibody.