

## CD10 (7C7) Mouse mAb

db6527

Package : 50µL 100µL

**Product Name** : CD10 (7C7) Mouse mAb**Cat.No.:** db6527**Synonyms** : Atriopeptidase; gp100; MGC126681; Enkephalinase**Application** : IHC-P**Reactivity** : Human, Rat, Mouse**Host species** : Mouse**Background**

Thermolysin-like specificity, but is almost confined on acting on polypeptides of up to 30 amino acids (PubMed/15283675, PubMed/8168535). Biologically important in the destruction of opioid peptides such as Met- and Leu-enkephalins by cleavage of a Gly-Phe bond (PubMed/17101991). Able to cleave angiotensin-1, angiotensin-2 and angiotensin 1-9 (PubMed/15283675). Involved in the degradation of atrial natriuretic factor (ANF) (PubMed/2531377, PubMed/2972276). Displays UV-inducible elastase activity toward skin preelastic and elastic fibers (PubMed/20876573).

**Immunogen**

Synthetic peptide conjugated to KLH

**Gene ID**

4311

**Swiss Prot**

P08473

**Synonyms**

Atriopeptidase; gp100; MGC126681; Enkephalinase

**Reactivity**

Human, Rat, Mouse

**Application**

IHC-P

**Recommended dilution**

IHC: 1:50-1:100

**Host species**

Mouse

**Clonality**

Monoclonal

**Clonality No.**

7C7-1G5-10E3

**Isotype**

IgG1

**Purity**

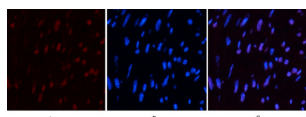
Affinity Purification

**Conjugation**

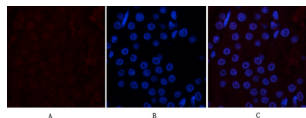
Un-conjugated

**Storage Stability**

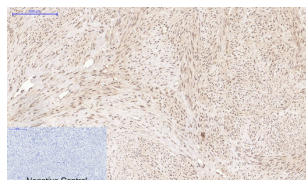
Store at -20°C. Supplied in PBS, 50% Glycerol(pH 7.3), 0.02% sodium azide and 0.5% BSA .  
Stable for 12 months from date of receipt.



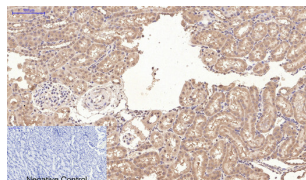
Immunofluorescence analysis of CD10 (7C7) in Human uterus tissue using CD10 (7C7) antibody(red),and DAPI (blue).



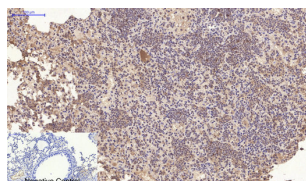
Immunofluorescence analysis of CD10 (7C7) in rat kidney using CD10 antibody(red),and DAPI (blue).



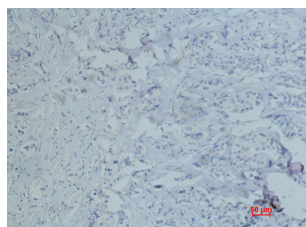
Immunohistochemistry analysis of paraffin-embedded Human uterus tissue using CD10 antibody. High-pressure and temperature Sodium Citrate pH 6.0 was used for antigen retrieval. Negative control was used by secondary antibody only.



Immunohistochemistry analysis of paraffin-embedded rat kidney tissue using CD10 antibody.High-pressure and temperature Sodium Citrate pH 6.0 was used for antigen retrieval. Negative control was used by secondary antibody only.



Immunohistochemistry analysis of paraffin-embedded mouse lung tissue using CD10 antibody.High-pressure and temperature Sodium Citrate pH 6.0 was used for antigen retrieval.Negative control was used by secondary antibody only.



Immunohistochemistry analysis of paraffin-embedded Human breast cancer using CD10 (7C7) antibody.High-pressure and temperature Sodium Citrate pH 6.0 was used for antigen retrieval.v