

Ubiquitin (1B8) Mouse mAb

db6552

Package : 50µL 100µL

Product Name : Ubiquitin (1B8) Mouse mAb**Cat.No.:** db6552**Synonyms** : FLJ25987; MGC8385; ubiquitin B; Ubiquitin; UBCEP1; UBCEP2; RPS27A**Application** : WB, IHC-P**Reactivity** : Transfected**Host species** : Mouse**Background**

Plays an important role in the ubiquitin-proteasome pathway. Ubiquitin can be covalently linked to many cellular proteins by the ubiquitination process, which targets proteins for degradation by the 26S proteasome. Three components are involved in the target protein-ubiquitin conjugation process. Ubiquitin is first activated by forming a thiolester complex with the activation component E1; the activated ubiquitin is subsequently transferred to the ubiquitin-carrier protein E2, then from E2 to ubiquitin ligase E3 for final delivery to the epsilon-NH2 of the target protein lysine residue.

Immunogen

Synthetic peptide conjugated to KLH

Gene ID

7314

Swiss Prot

P0CG47

Synonyms

FLJ25987; MGC8385; ubiquitin B; Ubiquitin; UBCEP1; UBCEP2; RPS27A

Reactivity

Transfected

Application

WB, IHC-P

Recommended dilution

WB: 1:500-1:1000

IHC: 1:50-1:100

Calculated MW

8 kDa

Host species

Mouse

Clonality

Monoclonal

Clonality No.

1B8-8E7-1H7

Isotype

IgG1

Purity

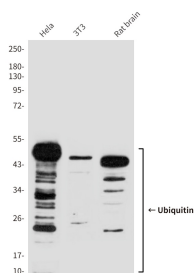
Affinity Purification

Conjugation

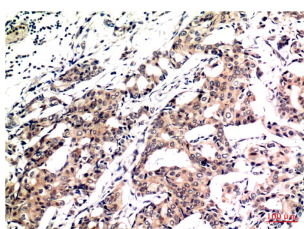
Un-conjugated

Storage Stability

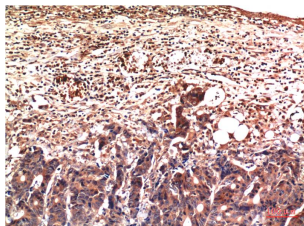
Store at -20°C. Supplied in PBS, 50% Glycerol(pH 7.3), 0.02% sodium azide and 0.5% BSA .
Stable for 12 months from date of receipt.



Western blot analysis of Ubiquitin (1B8) in Hela lysates, 3T3 lysates, rat Brain lysates using Ubiquitin antibody.



Immunohistochemistry analysis of paraffin-embedded Human Breast Carcinoma Tissue using Ubiquitin antibody. High-pressure and temperature Sodium Citrate pH 6.0 was used for antigen retrieval.



Immunohistochemistry analysis of paraffin-embedded Human Stomach Carcinoma Tissue using Ubiquitin antibody. High-pressure and temperature Sodium Citrate pH 6.0 was used for antigen retrieval.