

## gamma Tubulin (8H4) Mouse mAb

db6553

Package : 50µL 100µL

**Product Name** : gamma Tubulin (8H4) Mouse mAb**Cat.No.:** db6553**Synonyms** : TUBG1; TUBG; Tubulin gamma-1 chain; Gamma-1-tubulin; Gamma-tubulin complex component 1;  
GCP-1**Application** : IHC-P**Reactivity** : Human**Host species** : Mouse**Background**

Tubulin is the major constituent of microtubules. The gamma chain is found at microtubule organizing centers (MTOC) such as the spindle poles or the centrosome. Pericentriolar matrix component that regulates alpha/beta chain minus-end nucleation, centrosome duplication and spindle formation.

**Immunogen**

Synthetic peptide conjugated to KLH

**Gene ID**

7283

**Swiss Prot**

P23258

**Synonyms**TUBG1; TUBG; Tubulin gamma-1 chain; Gamma-1-tubulin; Gamma-tubulin complex component 1;  
GCP-1**Reactivity**

Human

**Application**

IHC-P

**Recommended dilution**

IHC: 1:50-1:100

**Calculated MW**

50 kDa

**Host species**

Mouse

**Clonality**

Monoclonal

**Clonality No.**

8H4-4B8-10C2

**Isotype**

IgG1

**Purity**

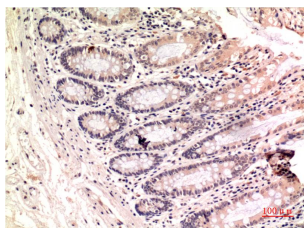
Affinity Purification

**Conjugation**

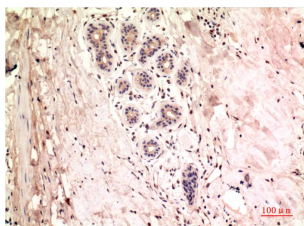
Un-conjugated

**Storage Stability**

Store at -20°C. Supplied in PBS, 50% Glycerol(pH 7.3), 0.02% sodium azide and 0.5% BSA .  
Stable for 12 months from date of receipt.



Immunohistochemistry analysis of paraffin-embedded Human Colon Carcinoma Tissue using gamma Tubulin (8H4) antibody. High-pressure and temperature Sodium Citrate pH 6.0 was used for antigen retrieval.



Immunohistochemical analysis of paraffin-embedded Human tonsils using gamma Tubulin (8H4) antibody. High-pressure and temperature Sodium Citrate pH 6.0 was used for antigen retrieval.