

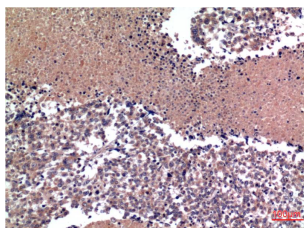
Cyclin B1 (1B3) Mouse mAb

db6561

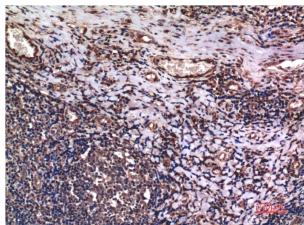
Package : 50µL 100µL

Product Name : Cyclin B1 (1B3) Mouse mAb**Cat.No.:** db6561**Synonyms** : CCNB1; G2 mitotic specific cyclin B1**Application** : IHC-P**Reactivity** : Human, Rat, Mouse**Host species** : Mouse

Background	Essential for the control of the cell cycle at the G2/M (mitosis) transition. a member of the highly conserved cyclin family, whose members are characterized by a dramatic periodicity in protein abundance through the cell cycle. Cyclins function as regulators of CDK kinases.
Immunogen	Synthetic peptide conjugated to KLH
Gene ID	891
Swiss Prot	P14635
Synonyms	CCNB1; G2 mitotic specific cyclin B1
Reactivity	Human, Rat, Mouse
Application	IHC-P
Recommended dilution	IHC: 1:50-1:100
Calculated MW	55 kDa
Host species	Mouse
Clonality	Monoclonal
Clonality No.	1B3-3B1-1B4
Isotype	IgG
Purity	Affinity Purification
Conjugation	Un-conjugated
Storage Stability	Store at -20°C. Supplied in PBS, 50% Glycerol(pH 7.3), 0.02% sodium azide and 0.5% BSA . Stable for 12 months from date of receipt.



Immunohistochemistry analysis of paraffin-embedded Human Lung Carcinoma Tissue using Cyclin B1 (1B3) antibody. High-pressure and temperature Sodium Citrate pH 6.0 was used for antigen retrieval.



Immunohistochemical analysis of paraffin-embedded Human tonsils using Cyclin B1 (1B3) antibody. High-pressure and temperature Sodium Citrate pH 6.0 was used for antigen retrieval.