

TGF beta 1 (8F6) Mouse mAb

db6572

Package : 50µL 100µL

Product Name : TGF beta 1 (8F6) Mouse mAb**Cat.No.:** db6572**Synonyms** : TGF beta 1; TGFB; CED; LAP**Application** : WB, IHC-P**Reactivity** : Human, Rat, Mouse**Host species** : Mouse**Background**

Multifunctional protein that controls proliferation, differentiation and other functions in many cell types. Many cells synthesize TGFB1 and have specific receptors for it. It positively and negatively regulates many other growth factors. It plays an important role in bone remodeling as it is a potent stimulator of osteoblastic bone formation, causing chemotaxis, proliferation and differentiation in committed osteoblasts. Stimulates sustained production of collagen through the activation of CREB3L1 by regulated intramembrane proteolysis (RIP) (PubMed/25310401). Can promote either T-helper 17 cells (Th17) or regulatory T-cells (Treg) lineage differentiation in a concentration-dependent manner. At high concentrations, leads to FOXP3-mediated suppression of RORC and down-regulation of IL-17 expression, favoring Treg cell development. At low concentrations in concert with IL-6 and IL-21, leads to expression of the IL-17 and IL-23 receptors, favoring differentiation to Th17 cells. Mediates SMAD2/3 activation by inducing its phosphorylation and subsequent translocation to the nucleus (PubMed/25893292). Can induce epithelial-to-mesenchymal transition (EMT) and cell migration in various cell types (PubMed/25893292).

Immunogen

Synthetic peptide conjugated to KLH

Gene ID

7040

Swiss Prot

P01137

Synonyms

TGF beta 1; TGFB; CED; LAP

Reactivity

Human, Rat, Mouse

Application

WB, IHC-P

Recommended dilution

WB: 1:500-1:1000

IHC: 1:50-1:100

Calculated MW

44 kDa

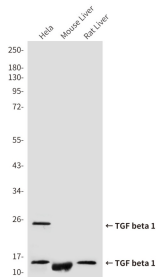
Observed MW

12,25,45-65 kDa

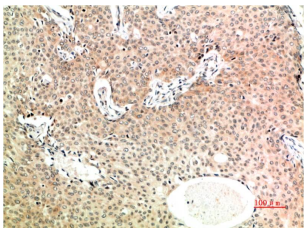
Host species

Mouse

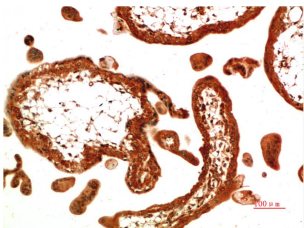
Clonality	Monoclonal
Clonality No.	8F6-3G10-4G9
Isotype	IgG1
Purity	Affinity Purification
Conjugation	Un-conjugated
Storage Stability	Store at -20°C. Supplied in PBS, 50% Glycerol(pH 7.3), 0.02% sodium azide and 0.5% BSA . Stable for 12 months from date of receipt.



Western blot analysis of TGF beta 1 (8F6)in Hela lysates, mouse Liver lysates, rat Liver lysates using TGF&beta 1 antibody.



Immunohistochemistry analysis of paraffin-embedded Human Breast Carcinoma Tissue using TGF beta 1 (8F6) antibody.High-pressure and temperature Sodium Citrate pH 6.0 was used for antigen retrieval.



Immunohistochemistry analysis of paraffin-embedded Human Placental Tissue using TGF beta 1 (8F6) antibody. High-pressure and temperature Sodium Citrate pH 6.0 was used for antigen retrieval.