

Recombinant

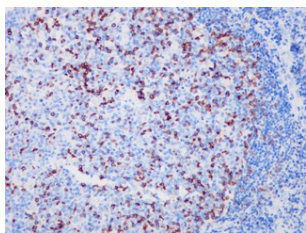
PD-1 (BP6003) Rabbit mAb

db30001

Package : 100μL

Product Name : PD-1 (BP6003) Rabbit mAb**Cat.No.:** db30001**Synonyms :** PD1; PD-1; CD279; SLEB2; hPD-1; hPD-I; hSLE1**Application :** IHC, WB, FC**Reactivity :** Human**Host species :** Rabbit

Background	Programmed death 1 (PD-1) is a cell surface co-receptor in the CD28/CTLA-4 T-cell family and functions as a down regulator of the immune system through a dual mechanism of inhibition.
Immunogen	Recombinant full length protein corresponding to Human PD-1. The immunogen contains the specific extracellular domain of huPD1 (L25-Q167)
Swiss Prot	Q15116
Synonyms	PD1; PD-1; CD279; SLEB2; hPD-1; hPD-I; hSLE1
Reactivity	Human
Application	IHC, WB, FC
Recommended dilution	IHC: 1:100-1:200
Calculated MW	32 kDa
Host species	Rabbit
Clonality	Monoclonal
Clonality No.	BP6003
Isotype	IgG
Purity	Affinity Purification
Conjugation	Un-conjugated
Storage Stability	Store at -20°C. Supplied in 50mM Tris-Glycine(pH 7.4), 0.15M NaCl, 40% Glycerol, 0.01% sodium azide and 0.05% BSA. Stable for 12 months from date of receipt.



Immunohistochemistry of paraffin-embedded human tonsil using PD-1 antibody at dilution of 1:200 (200x lens).