

Recombinant

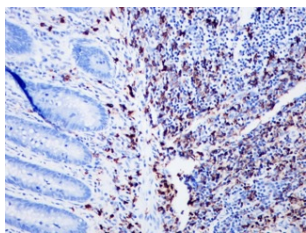
CD20 (BP6006) Rabbit mAb

db30003

Package : 100µL

Product Name : CD20 (BP6006) Rabbit mAb**Cat.No.:** db30003**Synonyms :** B1; S7; Bp35; CD20; CVID5; MS4A2; LEU-16**Application :** IHC, WB, FC**Reactivity :** Human**Host species :** Rabbit

Background	CD20 is a membrane-embedded 33kDa nonglycosylated phosphoprotein which play a role in B? cell activation, differentiation, and cell-cycle progression.
Immunogen	Synthetic peptide corresponding to CD20 residues within aa197 - C terminal of CD20 was used as an immunogen
Swiss Prot	P11836
Synonyms	B1; S7; Bp35; CD20; CVID5; MS4A2; LEU-16
Reactivity	Human
Application	IHC, WB, FC
Recommended dilution	IHC: 1:100-1:200
Calculated MW	33 kDa
Host species	Rabbit
Clonality	Monoclonal
Clonality No.	BP6006
Isotype	IgG
Purity	Affinity Purification
Conjugation	Un-conjugated
Storage Stability	Store at -20°C. Supplied in 50mM Tris-Glycine(pH 7.4), 0.15M NaCl, 40% Glycerol, 0.01% sodium azide and 0.05% BSA. Stable for 12 months from date of receipt.



Immunohistochemistry of paraffin-embedded human appendix using CD20 antibody at dilution of 1:200 (200x lens).