

Recombinant

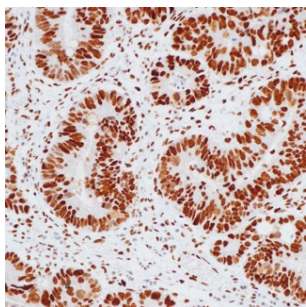
MSH6 (BP6007) Rabbit mAb

db30004

Package : 100μL

Product Name : MSH6 (BP6007) Rabbit mAb**Cat.No.:** db30004**Synonyms :** GTBP; HSAP; p160; GTMBP; HNPCC5**Application :** IHC**Reactivity :** Human**Host species :** Rabbit

Background	MSH6 is a mismatch repair protein which is deficient in a high proportion of patients with microsatellite instability (MSI-H).
Immunogen	Synthetic peptide corresponding to MSH6 residues within aa1 - 100 of MSH6 was used as an immunogen
Swiss Prot	P52701
Synonyms	GTBP; HSAP; p160; GTMBP; HNPCC5
Reactivity	Human
Application	IHC
Recommended dilution	IHC: 1:100-1:200
Calculated MW	153 kDa
Host species	Rabbit
Clonality	Monoclonal
Clonality No.	BP6007
Isotype	IgG
Purity	Affinity Purification
Conjugation	Un-conjugated
Storage Stability	Store at -20°C. Supplied in 50mM Tris-Glycine(pH 7.4), 0.15M NaCl, 40% Glycerol, 0.01% sodium azide and 0.05% BSA. Stable for 12 months from date of receipt.



Immunohistochemistry of paraffin-embedded human colon cancer using MSH6 antibody at dilution of 1:200 (200x lens).