

## Recombinant

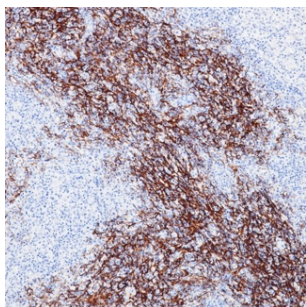
## CD21 (BP6015) Rabbit mAb

db30009

Package : 100μL

**Product Name :** CD21 (BP6015) Rabbit mAb**Cat.No.:** db30009**Synonyms :** CR; C3DR; CD21; CVID7; SLEB9**Application :** IHC, WB, FC**Reactivity :** Human**Host species :** Rabbit

<b>Background</b>	CD21 also known as complement C3d receptor, Epstein-Barr virus receptor, and complement receptor type 2 (CR2), is a protein that in humans is encoded by the CR2 gene.
<b>Immunogen</b>	Synthetic peptide corresponding to CD21 residues within aa933 - C terminal of CD21 was used as an immunogen
<b>Swiss Prot</b>	P20023
<b>Synonyms</b>	CR; C3DR; CD21; CVID7; SLEB9
<b>Reactivity</b>	Human
<b>Application</b>	IHC, WB, FC
<b>Recommended dilution</b>	IHC: 1:100-1:200
<b>Calculated MW</b>	113 kDa
<b>Host species</b>	Rabbit
<b>Clonality</b>	Monoclonal
<b>Clonality No.</b>	BP6015
<b>Isotype</b>	IgG
<b>Purity</b>	Affinity Purification
<b>Conjugation</b>	Un-conjugated
<b>Storage Stability</b>	Store at -20°C. Supplied in 50mM Tris-Glycine(pH 7.4), 0.15M NaCl, 40% Glycerol, 0.01% sodium azide and 0.05% BSA. Stable for 12 months from date of receipt.



Immunohistochemistry of paraffin-embedded human T cell lymphoma using CD21 antibody at dilution of 1:200 (200x lens).