

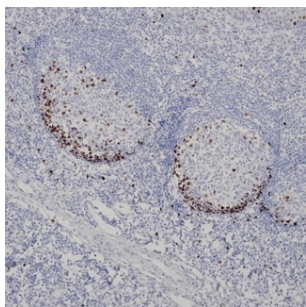
## Recombinant

Topoisomerase II- $\alpha$  (BP6016) Rabbit mAb

db30010

Package : 100 $\mu$ L**Product Name** : Topoisomerase II- $\alpha$  (BP6016) Rabbit mAb**Cat.No.:** db30010**Synonyms** : TOP2; TP2A**Application** : IHC, WB, FC**Reactivity** : Human**Host species** : Rabbit

<b>Background</b>	The topoisomerase II- $\alpha$ isoform is a 170 kDa nuclear protein and plays an important role in DNA synthesis and RNA transcription, as well as chromosomal segregation during mitosis.
<b>Immunogen</b>	Synthetic peptide corresponding to Topo II $\alpha$ residues within aa1431-1531 of Topo II $\alpha$ was used as an immunogen
<b>Swiss Prot</b>	P11388
<b>Synonyms</b>	TOP2; TP2A
<b>Reactivity</b>	Human
<b>Application</b>	IHC, WB, FC
<b>Recommended dilution</b>	IHC: 1:100-1:200
<b>Calculated MW</b>	174 kDa
<b>Host species</b>	Rabbit
<b>Clonality</b>	Monoclonal
<b>Clonality No.</b>	BP6016
<b>Isotype</b>	IgG
<b>Purity</b>	Affinity Purification
<b>Conjugation</b>	Un-conjugated
<b>Storage Stability</b>	Store at -20°C. Supplied in 50mM Tris-Glycine(pH 7.4), 0.15M NaCl, 40% Glycerol, 0.01% sodium azide and 0.05% BSA. Stable for 12 months from date of receipt.



Immunohistochemistry of paraffin-embedded human tonsil using Topoisomerase II- $\alpha$  antibody at dilution of 1:200 (200x lens).