

Recombinant

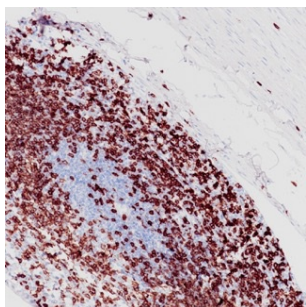
CD3 (BP6027) Rabbit mAb

db30018

Package : 100μL

Product Name : CD3 (BP6027) Rabbit mAb**Cat.No.:** db30018**Synonyms :** T3E; TCRE; IMD18**Application :** IHC, FC**Reactivity :** Human**Host species :** Rabbit

Background	The CD3 protein is a T-cell marker, a complex of four structurally distinct membrane glycoprotein isoforms, comprising extracellular, transmembrane and intracellular domains.
Immunogen	Synthetic peptide corresponding to CD3E residues within aa1-100 of CD3E was used as an immunogen
Swiss Prot	P07766
Synonyms	T3E; TCRE; IMD18
Reactivity	Human
Application	IHC, FC
Recommended dilution	IHC: 1:100-1:200
Calculated MW	23 kDa
Host species	Rabbit
Clonality	Monoclonal
Clonality No.	BP6027
Isotype	IgG
Purity	Affinity Purification
Conjugation	Un-conjugated
Storage Stability	Store at -20°C. Supplied in 50mM Tris-Glycine(pH 7.4), 0.15M NaCl, 40% Glycerol, 0.01% sodium azide and 0.05% BSA. Stable for 12 months from date of receipt.



Immunohistochemistry of paraffin-embedded human appendix using CD3 antibody at dilution of 1:200 (200x lens).