

## Recombinant

## MUC1 (BP6034) Rabbit mAb

db30025

Package : 100μL

**Product Name** : MUC1 (BP6034) Rabbit mAb**Cat.No.:** db30025**Synonyms** : EMA; MCD; PEM; PUM; KL-6; MAM6; MCKD; PEMT; CD227; H23AG; MCKD1; MUC-1; ADMCKD; ADMCKD1; CA 15-3; MUC-1/X; MUC1/ZD; MUC-1/SEC**Application** : IHC, WB, FC**Reactivity** : Human**Host species** : Rabbit**Background**

MUC1 (Mucin 1) is a transmembrane glycoprotein that protects epithelial cells from injury caused by external stimuli. In addition to this role, MUC1 is involved in cell-cell adhesion, proliferation, motility, invasion and survival. In epithelial cells, MUC1 expression is regulated by binding of TNF $\alpha$  to TNFR1 and activation of the NF $\kappa$ B pathway.

**Immunogen**

Synthetic peptide corresponding to MUC1 residues within aa1155-1255 of MUC1 was used as an immunogen

**Swiss Prot**

P15941

**Synonyms**

EMA; MCD; PEM; PUM; KL-6; MAM6; MCKD; PEMT; CD227; H23AG; MCKD1; MUC-1; ADMCKD; ADMCKD1; CA 15-3; MUC-1/X; MUC1/ZD; MUC-1/SEC

**Reactivity**

Human

**Application**

IHC, WB, FC

**Recommended dilution**

IHC: 1:100-1:200

**Calculated MW**

122 kDa

**Host species**

Rabbit

**Clonality**

Monoclonal

**Clonality No.**

BP6034

**Isotype**

IgG

**Purity**

Affinity Purification

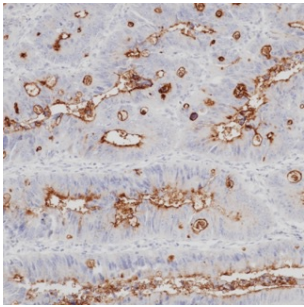
**Conjugation**

Un-conjugated

**Storage Stability**

Store at -20°C. Supplied in 50mM Tris-Glycine(pH 7.4), 0.15M NaCl, 40% Glycerol, 0.01% sodium

azide and 0.05% BSA. Stable for 12 months from date of receipt.



Immunohistochemistry of paraffin-embedded human colon cancer using MUC1 antibody at dilution of 1:200 (200x lens).