

Recombinant

CD138 (BP6035) Rabbit mAb

db30026

Package : 100μL

Product Name : CD138 (BP6035) Rabbit mAb**Cat.No.:** db30026**Synonyms :** SDC; CD138; SYND1; syndecan**Application :** IHC**Reactivity :** Human**Host species :** Rabbit**Background**

CD138, also designated syndecan-1, is a member of the syndecan family of four transmembrane spanning proteins capable of binding to heparan sulfate and chondroitin sulfate molecules. The syndecans' main functions are to control cell growth and differentiation as well as to maintain cell adhesion and cell migration.

Immunogen

Synthetic peptide corresponding to CD138 residues within aa200-300 of CD138 was used as an immunogen

Swiss Prot

P18827

Synonyms

SDC; CD138; SYND1; syndecan

Reactivity

Human

Application

IHC

Recommended dilution

IHC: 1:100-1:200

Calculated MW

32 kDa

Host species

Rabbit

Clonality

Monoclonal

Clonality No.

BP6035

Isotype

IgG

Purity

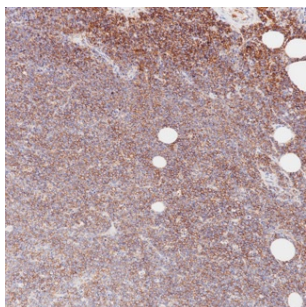
Affinity Purification

Conjugation

Un-conjugated

Storage Stability

Store at -20°C. Supplied in 50mM Tris-Glycine(pH 7.4), 0.15M NaCl, 40% Glycerol, 0.01% sodium azide and 0.05% BSA. Stable for 12 months from date of receipt.



Immunohistochemistry of paraffin-embedded human extramedullary plasmacytoma using CD138 antibody at dilution of 1:200 (200x lens).