

Recombinant

CD3 (BP6039) Rabbit mAb

db30030

Package : 100μL

Product Name : CD3 (BP6039) Rabbit mAb**Cat.No.:** db30030**Synonyms :** T3E; TCRE; IMD18**Application :** IHC, FC**Reactivity :** Human**Host species :** Rabbit**Background**

Cluster of differentiation 3 (CD3) is a multimeric protein complex, known historically as the T3 complex, and is composed of four distinct polypeptide chains; epsilon (ε), gamma (γ), delta (δ) and zeta (ζ), that assemble and function as three pairs of dimers (εγ, εδ, ζζ). The CD3 complex serves as a T cell co-receptor that associates noncovalently with the T cell receptor (TCR).

Immunogen

Synthetic peptide corresponding to CD3E residues within aa100-200 of CD3E was used as an immunogen

Swiss Prot

P07766

Synonyms

T3E; TCRE; IMD18

Reactivity

Human

Application

IHC, FC

Recommended dilution

IHC: 1:100-1:200

Calculated MW

23 kDa

Host species

Rabbit

Clonality

Monoclonal

Clonality No.

BP6039

Isotype

IgG

Purity

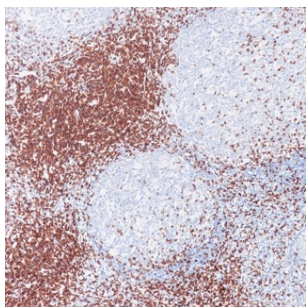
Affinity Purification

Conjugation

Un-conjugated

Storage Stability

Store at -20°C. Supplied in 50mM Tris-Glycine(pH 7.4), 0.15M NaCl, 40% Glycerol, 0.01% sodium azide and 0.05% BSA. Stable for 12 months from date of receipt.



Immunohistochemistry of paraffin-embedded human tonsil using CD3 antibody at dilution of 1:200 (200x lens).