

Recombinant

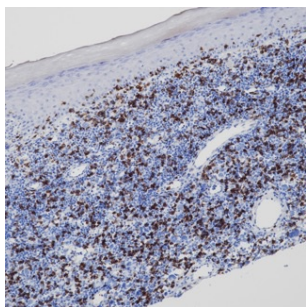
CD8 (BP6041) Rabbit mAb

db30032

Package : 100μL

Product Name : CD8 (BP6041) Rabbit mAb**Cat.No.:** db30032**Synonyms** : CD8; MAL; p32; Leu2**Application** : IHC, FC**Reactivity** : Human**Host species** : Rabbit

Background	The CD8 antigen is a cell surface glycoprotein found on most cytotoxic T lymphocytes that serves as a coreceptor for TCR recognition of MHC class I-associated peptides and supports CTL activation by binding to the MHC, while making no direct contact with the peptide.
Immunogen	Synthetic peptide corresponding to CD8α residues within aa135-235 of CD8α was used as an immunogen
Swiss Prot	P01732
Synonyms	CD8; MAL; p32; Leu2
Reactivity	Human
Application	IHC, FC
Recommended dilution	IHC: 1:100-1:200
Calculated MW	26 kDa
Host species	Rabbit
Clonality	Monoclonal
Clonality No.	BP6041
Isotype	IgG
Purity	Affinity Purification
Conjugation	Un-conjugated
Storage Stability	Store at -20°C. Supplied in 50mM Tris-Glycine(pH 7.4), 0.15M NaCl, 40% Glycerol, 0.01% sodium azide and 0.05% BSA. Stable for 12 months from date of receipt.



Immunohistochemistry of paraffin-embedded human T cell lymphoma using CD8 antibody at dilution of 1:200 (200x lens).