

Recombinant

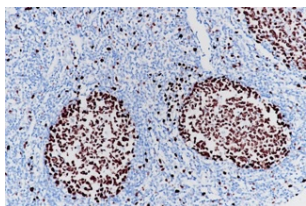
Ki-67 (BP6045) Rabbit mAb

db30035

Package : 100µL

Product Name : Ki-67 (BP6045) Rabbit mAb**Cat.No.:** db30035**Synonyms** : KIA; MIB-; MIB-1; PPP1R105**Application** : IHC, WB, FC**Reactivity** : Human**Host species** : Rabbit

Background	Antigen Ki-67 is a nuclear protein that is associated with and may be necessary for cellular proliferation. Furthermore, it is associated with ribosomal RNA transcription.
Immunogen	Synthetic peptide corresponding to Ki-67 residues within aa1000-1100 of Ki-67 was used as an immunogen
Swiss Prot	P46013
Synonyms	KIA; MIB-; MIB-1; PPP1R105
Reactivity	Human
Application	IHC, WB, FC
Recommended dilution	IHC: 1:100-1:200
Calculated MW	359 kDa
Host species	Rabbit
Clonality	Monoclonal
Clonality No.	BP6045
Isotype	IgG
Purity	Affinity Purification
Conjugation	Un-conjugated
Storage Stability	Store at -20°C. Supplied in 50mM Tris-Glycine(pH 7.4), 0.15M NaCl, 40% Glycerol, 0.01% sodium azide and 0.05% BSA. Stable for 12 months from date of receipt.



Immunohistochemistry of paraffin-embedded human tonsil using Ki-67 antibody at dilution of 1:200 (200x lens).