

Recombinant

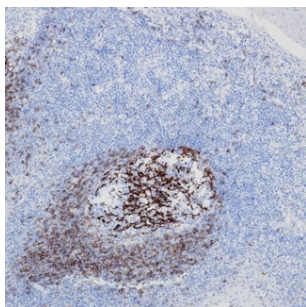
CD23 (BP6049) Rabbit mAb

db30039

Package : 100μL

Product Name : CD23 (BP6049) Rabbit mAb**Cat.No.:** db30039**Synonyms :** CD23; FCE2; CD23A; IGEBF; CLEC4J; BLAST-2**Application :** IHC**Reactivity :** Human**Host species :** Rabbit

Background	CD23 antigen is a transmembrane glycoprotein by various hematopoietic cell types and functions as a low-affinity receptor for IgE. CD23 is involved in regulating IgE production and has other potential biologic functions, including promoting the survival of germinal center B lymphocytes.
Immunogen	Synthetic peptide corresponding to CD23 residues within aa221-321 of CD23 was used as an immunogen
Swiss Prot	P06734
Synonyms	CD23; FCE2; CD23A; IGEBF; CLEC4J; BLAST-2
Reactivity	Human
Application	IHC
Recommended dilution	IHC: 1:100-1:200
Calculated MW	36 kDa
Host species	Rabbit
Clonality	Monoclonal
Clonality No.	BP6049
Isotype	IgG
Purity	Affinity Purification
Conjugation	Un-conjugated
Storage Stability	Store at -20°C. Supplied in 50mM Tris-Glycine(pH 7.4), 0.15M NaCl, 40% Glycerol, 0.01% sodium azide and 0.05% BSA. Stable for 12 months from date of receipt.



Immunohistochemistry of paraffin-embedded human tonsil using CD23 antibody at dilution of 1:200 (200x lens).