

## Recombinant

## Cytokeratin 14 (BP6052) Rabbit mAb

db30042

Package : 100µL

**Product Name :** Cytokeratin 14 (BP6052) Rabbit mAb**Cat.No.:** db30042**Synonyms :** K14; NFJ; CK14; EBS3; EBS4**Application :** IHC, WB, FC**Reactivity :** Human**Host species :** Rabbit**Background**

Cytokeratin 14 is a member of the type I keratin family of intermediate filament proteins. It always pairs with the type II keratin K5 and form the primary keratin pair of the keratinocytes of stratified squamous epithelia, including the epidermis as well as mucosal non-keratinizing stratified squamous epithelia.

**Immunogen**

Synthetic peptide corresponding to cytokeratin 14 residues within aa372-472 of cytokeratin 14 was used as an immunogen

**Swiss Prot**

P02533

**Synonyms**

K14; NFJ; CK14; EBS3; EBS4

**Reactivity**

Human

**Application**

IHC, WB, FC

**Recommended dilution**

IHC: 1:100-1:200

**Calculated MW**

52 kDa

**Host species**

Rabbit

**Clonality**

Monoclonal

**Clonality No.**

BP6052

**Isotype**

IgG

**Purity**

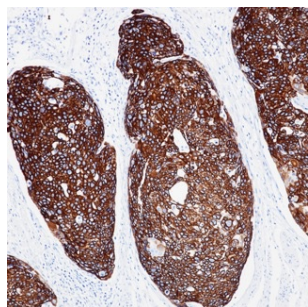
Affinity Purification

**Conjugation**

Un-conjugated

**Storage Stability**

Store at -20°C. Supplied in 50mM Tris-Glycine(pH 7.4), 0.15M NaCl, 40% Glycerol, 0.01% sodium azide and 0.05% BSA. Stable for 12 months from date of receipt.



Immunohistochemistry of paraffin-embedded human esophageal squamous carcinoma using Cytokeratin 14 antibody at dilution of 1:200 (200x lens).