

## Recombinant

## Synaptophysin (BP6053) Rabbit mAb

db30043

Package : 100µL

**Product Name :** Synaptophysin (BP6053) Rabbit mAb**Cat.No.:** db30043**Synonyms :** MRX96; MRXSYN**Application :** IHC, WB, FC**Reactivity :** Human**Host species :** Rabbit**Background**

Synaptophysin, also known as the major synaptic vesicle protein p38, is a protein that in humans is encoded by the SYP gene. The exact function of the protein is unknown: it interacts with the essential synaptic vesicle protein synaptobrevin, but when the synaptophysin gene is experimentally inactivated in animals, they still develop and function normally.

**Immunogen**

Synthetic peptide corresponding to synaptophysin residues within aa213-313 of synaptophysin was used as an immunogen

**Swiss Prot**

P08247

**Synonyms**

MRX96; MRXSYN

**Reactivity**

Human

**Application**

IHC, WB, FC

**Recommended dilution**

IHC: 1:100-1:200

**Calculated MW**

34 kDa

**Host species**

Rabbit

**Clonality**

Monoclonal

**Clonality No.**

BP6053

**Isotype**

IgG

**Purity**

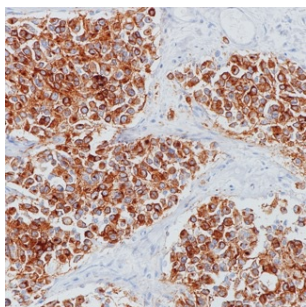
Affinity Purification

**Conjugation**

Un-conjugated

**Storage Stability**

Store at -20°C. Supplied in 50mM Tris-Glycine(pH 7.4), 0.15M NaCl, 40% Glycerol, 0.01% sodium azide and 0.05% BSA. Stable for 12 months from date of receipt.



Immunohistochemistry of paraffin-embedded human glioma using Synaptophysin antibody at dilution of 1:200 (200x lens).