

Recombinant

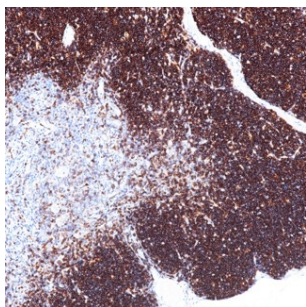
CD1a (BP6055) Rabbit mAb

db30045

Package : 100μL

Product Name : CD1a (BP6055) Rabbit mAb**Cat.No.:** db30045**Synonyms :** R4; T6; CD1; FCB6; HTA1**Application :** IHC**Reactivity :** Human**Host species :** Rabbit

Background	CD1a is a member of the family group 1 CD1 proteins (CD1a, CD1b, and CD1c), which share the capacity to present microbial lipid antigens to T cells.
Immunogen	Synthetic peptide corresponding to CD1a residues within aa1-100 of CD1a was used as an immunogen
Swiss Prot	P06126
Synonyms	R4; T6; CD1; FCB6; HTA1
Reactivity	Human
Application	IHC
Recommended dilution	IHC: 1:100-1:200
Calculated MW	37 kDa
Host species	Rabbit
Clonality	Monoclonal
Clonality No.	BP6055
Isotype	IgG
Purity	Affinity Purification
Conjugation	Un-conjugated
Storage Stability	Store at -20°C. Supplied in 50mM Tris-Glycine(pH 7.4), 0.15M NaCl, 40% Glycerol, 0.01% sodium azide and 0.05% BSA. Stable for 12 months from date of receipt.



Immunohistochemistry of paraffin-embedded human thymus using CD1a antibody at dilution of 1:200 (200x lens).