

Recombinant

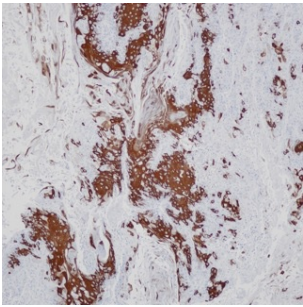
Cytokeratin 10 (BP6057) Rabbit mAb

db30047

Package : 100µL

Product Name : Cytokeratin 10 (BP6057) Rabbit mAb**Cat.No.:** db30047**Synonyms** : BIE; EHK; K10; KPP; BCIE; CK10**Application** : IHC, FC**Reactivity** : Human**Host species** : Rabbit

Background	Cytokeratin 10 is a member of the type I (acidic) cytokeratin family, which belongs to the superfamily of intermediate filament (IF) proteins. Cytokeratin 10 can specifically inhibits proliferation and cell cycle progression of keratinocytes.
Immunogen	Synthetic peptide corresponding to Cytokeratin 10 residues within aa484-584 of Cytokeratin 10 was used as an immunogen
Swiss Prot	P13645
Synonyms	BIE; EHK; K10; KPP; BCIE; CK10
Reactivity	Human
Application	IHC, FC
Recommended dilution	IHC: 1:100-1:200
Calculated MW	59 kDa
Host species	Rabbit
Clonality	Monoclonal
Clonality No.	BP6057
Isotype	IgG
Purity	Affinity Purification
Conjugation	Un-conjugated
Storage Stability	Store at -20°C. Supplied in 50mM Tris-Glycine(pH 7.4), 0.15M NaCl, 40% Glycerol, 0.01% sodium azide and 0.05% BSA. Stable for 12 months from date of receipt.



Immunohistochemistry of paraffin-embedded human bladder cancer using Cytokeratin 10 antibody at dilution of 1:200 (200x lens).