

## Recombinant

## CD10 (BP6059) Rabbit mAb

db30049

Package : 100µL

**Product Name :** CD10 (BP6059) Rabbit mAb**Cat.No.:** db30049**Synonyms :** NEP; SFE; CD10; CALLA; CMT2T; SCA43**Application :** IHC, WB, FC**Reactivity :** Human**Host species :** Rabbit**Background**

CD10 is a single-chain cell surface glycoprotein, also is designated as common acute lymphoblastic leukaemia antigen (CALLA), neprilysin and neutral endopeptidase. Besides, CD10 is a zink-dependent peptidase (metalloprotease), degrading various bioactive peptides, and it plays a functional role by modulating cellular responses to peptide substrates.

**Immunogen**

A recombinant protein corresponding to CD10 residues within aa1-500 was used as an immunogen

**Swiss Prot**

P08473

**Synonyms**

NEP; SFE; CD10; CALLA; CMT2T; SCA43

**Reactivity**

Human

**Application**

IHC, WB, FC

**Recommended dilution**

IHC: 1:100-1:200

**Calculated MW**

86 kDa

**Host species**

Rabbit

**Clonality**

Monoclonal

**Clonality No.**

BP6059

**Isotype**

IgG

**Purity**

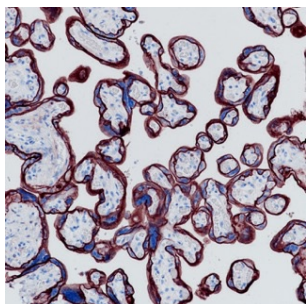
Affinity Purification

**Conjugation**

Un-conjugated

**Storage Stability**

Store at -20°C. Supplied in 50mM Tris-Glycine(pH 7.4), 0.15M NaCl, 40% Glycerol, 0.01% sodium azide and 0.05% BSA. Stable for 12 months from date of receipt.



Immunohistochemistry of paraffin-embedded human placenta using CD10 antibody at dilution of 1:200 (200x lens).