

## Recombinant

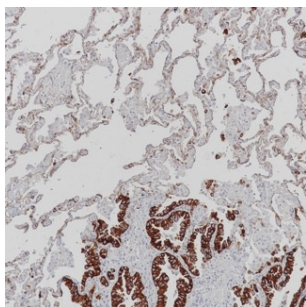
## Cytokeratin 7 (BP6060) Rabbit mAb

db30050

Package : 100µL

**Product Name :** Cytokeratin 7 (BP6060) Rabbit mAb**Cat.No.:** db30050**Synonyms :** K7; CK7; SCL; K2C7**Application :** IHC, WB, FC**Reactivity :** Human**Host species :** Rabbit

<b>Background</b>	Cytokeratin 7 in humans is a protein encoded by the KRT7 gene. It is always as a keratin pair with Cytokeratin 19.
<b>Immunogen</b>	Synthetic peptide corresponding to Cytokeratin 7 residues within aa1-100 of Cytokeratin 7 was used as an immunogen
<b>Swiss Prot</b>	P08729
<b>Synonyms</b>	K7; CK7; SCL; K2C7
<b>Reactivity</b>	Human
<b>Application</b>	IHC, WB, FC
<b>Recommended dilution</b>	IHC: 1:100-1:200
<b>Calculated MW</b>	51 kDa
<b>Host species</b>	Rabbit
<b>Clonality</b>	Monoclonal
<b>Clonality No.</b>	BP6060
<b>Isotype</b>	IgG
<b>Purity</b>	Affinity Purification
<b>Conjugation</b>	Un-conjugated
<b>Storage Stability</b>	Store at -20°C. Supplied in 50mM Tris-Glycine(pH 7.4), 0.15M NaCl, 40% Glycerol, 0.01% sodium azide and 0.05% BSA. Stable for 12 months from date of receipt.



Immunohistochemistry of paraffin-embedded human lung using Cytokeratin 7 antibody at dilution of 1:200 (200x lens).