

Recombinant

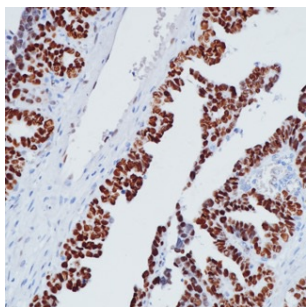
WT1 (BP6062) Rabbit mAb

db30052

Package : 100µL

Product Name : WT1 (BP6062) Rabbit mAb**Cat.No.:** db30052**Synonyms :** GUD; AWT1; WAGR; WT33; NPHS4; WIT-2; EWS-WT1**Application :** IHC**Reactivity :** Human**Host species :** Rabbit

Background	The WT1 gene located at chromosome 11p13 codes for a transcription factor, a DNA-binding nucleoprotein, that plays a role primarily in the development of genitourinary organs.
Immunogen	Synthetic peptide corresponding to WT1 residues within aa1-100 of WT1 was used as an immunogen
Swiss Prot	P19544
Synonyms	GUD; AWT1; WAGR; WT33; NPHS4; WIT-2; EWS-WT1
Reactivity	Human
Application	IHC
Recommended dilution	IHC: 1:100-1:200
Calculated MW	49 kDa
Host species	Rabbit
Clonality	Monoclonal
Clonality No.	BP6062
Isotype	IgG
Purity	Affinity Purification
Conjugation	Un-conjugated
Storage Stability	Store at -20°C. Supplied in 50mM Tris-Glycine(pH 7.4), 0.15M NaCl, 40% Glycerol, 0.01% sodium azide and 0.05% BSA. Stable for 12 months from date of receipt.



Immunohistochemistry of paraffin-embedded human ovarian cancer using WT1 antibody at dilution of 1:200 (200x lens).