

Recombinant

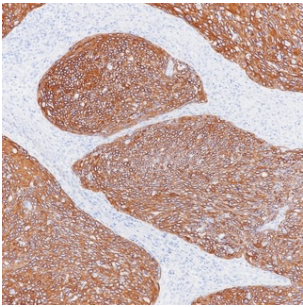
Cytokeratin 6 (BP6065) Rabbit mAb

db30055

Package : 100µL

Product Name : Cytokeratin 6 (BP6065) Rabbit mAb**Cat.No.:** db30055**Synonyms :** K6E; KRT6E; PPKNEFD**Application :** IHC, WB**Reactivity :** Human**Host species :** Rabbit

Background	Cytokeratin 6 is an epidermis-specific type I keratin involved in wound healing. Involved in the activation of follicular keratinocytes after wounding, while it does not play a major role in keratinocyte proliferation or migration. This protein always paired with the type-I keratin K16.
Immunogen	Synthetic peptide corresponding to Cytokeratin 6 residues within aa464-564 of Cytokeratin 6 was used as an immunogen
Swiss Prot	P48668
Synonyms	K6E; KRT6E; PPKNEFD
Reactivity	Human
Application	IHC, WB
Recommended dilution	IHC: 1:100-1:200
Calculated MW	60 kDa
Host species	Rabbit
Clonality	Monoclonal
Clonality No.	BP6065
Isotype	IgG
Purity	Affinity Purification
Conjugation	Un-conjugated
Storage Stability	Store at -20°C. Supplied in 50mM Tris-Glycine(pH 7.4), 0.15M NaCl, 40% Glycerol, 0.01% sodium azide and 0.05% BSA. Stable for 12 months from date of receipt.



Immunohistochemistry of paraffin-embedded human squamous carcinoma of the cervix using Cytokeratin 6 antibody at dilution of 1:200 (200x lens).