

Recombinant

p21 (BP6068) Rabbit mAb

db30058

Package : 100µL

Product Name : p21 (BP6068) Rabbit mAb**Cat.No.:** db30058**Synonyms** : P21; CIP1; SDI1; WAF1; CAP20; CDKN1; MDA-6; p21CIP1**Application** : IHC, FC**Reactivity** : Human**Host species** : Rabbit**Background**

p21, also known as cyclin-dependent kinase inhibitor 1 or CDK-interacting protein 1, is a protein that in humans is encoded by the CDKN1A gene located on chromosome 6 (6p21.2). The p21 protein binds to and inhibits the activity of cyclin-CDK2 or - CDK4 complexes, and thus functions as a regulator of cell cycle progression at G1.

Immunogen

Synthetic peptide corresponding to p21 residues within aa1-100 of p21 was used as an immunogen

Swiss Prot

P38936

Synonyms

P21; CIP1; SDI1; WAF1; CAP20; CDKN1; MDA-6; p21CIP1

Reactivity

Human

Application

IHC, FC

Recommended dilution

IHC: 1:100-1:200

Calculated MW

18 kDa

Host species

Rabbit

Clonality

Monoclonal

Clonality No.

BP6068

Isotype

IgG

Purity

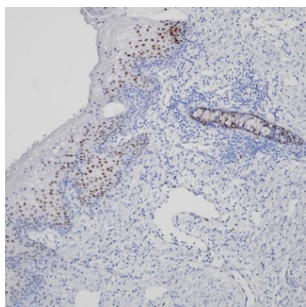
Affinity Purification

Conjugation

Un-conjugated

Storage Stability

Store at -20°C. Supplied in 50mM Tris-Glycine(pH 7.4), 0.15M NaCl, 40% Glycerol, 0.01% sodium azide and 0.05% BSA. Stable for 12 months from date of receipt.



Immunohistochemistry of paraffin-embedded human cervix using p21 antibody at dilution of 1:200 (200x lens).