

Recombinant

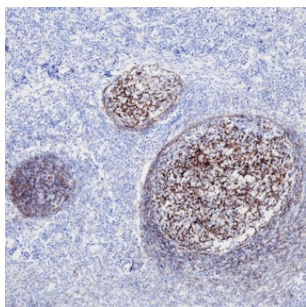
CD35 (BP6069) Rabbit mAb

db30059

Package : 100µL

Product Name : CD35 (BP6069) Rabbit mAb**Cat.No.:** db30059**Synonyms :** KN; C3BR; C4BR; CD35**Application :** IHC**Reactivity :** Human**Host species :** Rabbit

Background	CD35, complement receptor 1, is a cell membrane-bound, monomeric glycoprotein on numerous cell types including erythrocytes, leukocytes, glomerular podocytes, and follicular dendritic cells.
Immunogen	Synthetic peptide corresponding to CD35 residues within aa1939-2039 of CD35 was used as an immunogen
Swiss Prot	P17927
Synonyms	KN; C3BR; C4BR; CD35
Reactivity	Human
Application	IHC
Recommended dilution	IHC: 1:100-1:200
Calculated MW	224 kDa
Host species	Rabbit
Clonality	Monoclonal
Clonality No.	BP6069
Isotype	IgG
Purity	Affinity Purification
Conjugation	Un-conjugated
Storage Stability	Store at -20°C. Supplied in 50mM Tris-Glycine(pH 7.4), 0.15M NaCl, 40% Glycerol, 0.01% sodium azide and 0.05% BSA. Stable for 12 months from date of receipt.



Immunohistochemistry of paraffin-embedded human tonsil using CD35 antibody at dilution of 1:200 (200x lens).