

## Recombinant

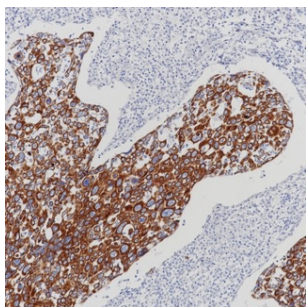
## Cytokeratin 1 (BP6077) Rabbit mAb

db30066

Package : 100µL

**Product Name** : Cytokeratin 1 (BP6077) Rabbit mAb**Cat.No.:** db30066**Synonyms** : K1; CK1; EHK; EHK1; EPPK; KRT1A; NEPPK**Application** : IHC, WB**Reactivity** : Human**Host species** : Rabbit

<b>Background</b>	Cytokeratin 1 may regulate the activity of kinases such as PKC and SRC via binding to integrin beta-1 (ITB1) and the receptor of activated protein kinase C (RACK1/GNB2L1).
<b>Immunogen</b>	Synthetic peptide corresponding to residues within aa200-300 of Cytokeratin 1 was used as an immunogen
<b>Swiss Prot</b>	P04264
<b>Synonyms</b>	K1; CK1; EHK; EHK1; EPPK; KRT1A; NEPPK
<b>Reactivity</b>	Human
<b>Application</b>	IHC, WB
<b>Recommended dilution</b>	IHC: 1:100-1:200
<b>Calculated MW</b>	66 kDa
<b>Host species</b>	Rabbit
<b>Clonality</b>	Monoclonal
<b>Clonality No.</b>	BP6077
<b>Isotype</b>	IgG
<b>Purity</b>	Affinity Purification
<b>Conjugation</b>	Un-conjugated
<b>Storage Stability</b>	Store at -20°C. Supplied in 50mM Tris-Glycine(pH 7.4), 0.15M NaCl, 40% Glycerol, 0.01% sodium azide and 0.05% BSA. Stable for 12 months from date of receipt.



Immunohistochemistry of paraffin-embedded human squamous carcinoma of the cervix using Cytokeratin 1 antibody at dilution of 1:200 (200x lens).