

Recombinant

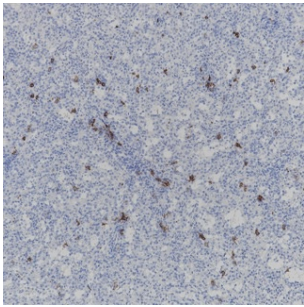
CD38 (BP6082) Rabbit mAb

db30070

Package : 100μL

Product Name : CD38 (BP6082) Rabbit mAb**Cat.No.:** db30070**Synonyms :** ADPRC1; ADPRC 1**Application :** IHC**Reactivity :** Human**Host species :** Rabbit

Background	CD38, also known as ADP-ribosyl cyclase, synthesizes the second messengers cyclic ADP-ribose and nicotinate-adenine dinucleotide phosphate, the former a second messenger for glucose-induced insulin secretion.
Immunogen	Synthetic peptide corresponding to residues within aa200-300 of CD38 was used as an immunogen
Swiss Prot	P28907
Synonyms	ADPRC1; ADPRC 1
Reactivity	Human
Application	IHC
Recommended dilution	IHC: 1:100-1:200
Calculated MW	34 kDa
Host species	Rabbit
Clonality	Monoclonal
Clonality No.	BP6082
Isotype	IgG
Purity	Affinity Purification
Conjugation	Un-conjugated
Storage Stability	Store at -20°C. Supplied in 50mM Tris-Glycine(pH 7.4), 0.15M NaCl, 40% Glycerol, 0.01% sodium azide and 0.05% BSA. Stable for 12 months from date of receipt.



Immunohistochemistry of paraffin-embedded human spleen using CD38 antibody at dilution of 1:200 (200x lens).