

## Recombinant

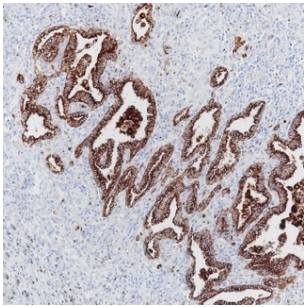
## Napsin A (BP6083) Rabbit mAb

db30071

Package : 100μL

**Product Name** : Napsin A (BP6083) Rabbit mAb**Cat.No.:** db30071**Synonyms** : KAP; Kdap; NAP1; NAPA; SNAPA**Application** : IHC**Reactivity** : Human**Host species** : Rabbit

<b>Background</b>	Napsin A is a pepsin-like aspartic proteinase contains 420 amino acids. It is predominantly expressed in the lung and kidney. In the lung, Napsin A is expressed in alveolar type II pneumocytes, regulated by TTF-1, and is involved in the generation of the surfactant protein B.
<b>Immunogen</b>	Synthetic peptide corresponding to residues within aa50-150 of Napsin A was used as an immunogen
<b>Swiss Prot</b>	O96009
<b>Synonyms</b>	KAP; Kdap; NAP1; NAPA; SNAPA
<b>Reactivity</b>	Human
<b>Application</b>	IHC
<b>Recommended dilution</b>	IHC: 1:100-1:200
<b>Calculated MW</b>	45 kDa
<b>Host species</b>	Rabbit
<b>Clonality</b>	Monoclonal
<b>Clonality No.</b>	BP6083
<b>Isotype</b>	IgG
<b>Purity</b>	Affinity Purification
<b>Conjugation</b>	Un-conjugated
<b>Storage Stability</b>	Store at -20°C. Supplied in 50mM Tris-Glycine(pH 7.4), 0.15M NaCl, 40% Glycerol, 0.01% sodium azide and 0.05% BSA. Stable for 12 months from date of receipt.



Immunohistochemistry of paraffin-embedded human adenocarcinoma of lung using Napsin A antibody at dilution of 1:200 (200x lens).