

Recombinant

CEA (BP6085) Rabbit mAb

db30073

Package : 100µL

Product Name : CEA (BP6085) Rabbit mAb**Cat.No.:** db30073**Synonyms** : CEA; CD66e**Application** : IHC**Reactivity** : Human**Host species** : Rabbit**Background**

Carcinoembryonic antigen (CEA) is a glycoprotein produced in colorectal cancer tissues. In normal adult tissue, CEA is expressed in the apical border and, to a lesser extent in the cytoplasm, of the columnar cells of colon, small intestine, stomach (surface epithelium, mucous neck cells and weakly in pyloric mucous cells), pancreatic ducts, secretory epithelia of sweat glands, squamous epithelial cells of the tongue, esophagus, uterine cervix, and urothelium.

Immunogen

Natural protein within full length CEA was used as an immunogen

Swiss Prot

P06731

Synonyms

CEA; CD66e

Reactivity

Human

Application

IHC

Recommended dilution

IHC: 1:100-1:200

Calculated MW

77 kDa

Host species

Rabbit

Clonality

Monoclonal

Clonality No.

BP6085

Isotype

IgG

Purity

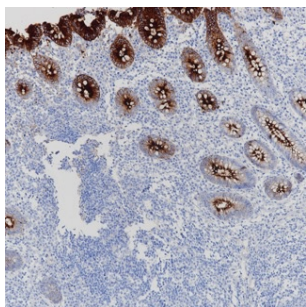
Affinity Purification

Conjugation

Un-conjugated

Storage Stability

Store at -20°C. Supplied in 50mM Tris-Glycine(pH 7.4), 0.15M NaCl, 40% Glycerol, 0.01% sodium azide and 0.05% BSA. Stable for 12 months from date of receipt.



Immunohistochemistry of paraffin-embedded human appendix using CEA antibody at dilution of 1:200 (200x lens).