

Recombinant

Myelin Basic Protein (BP6087) Rabbit mAb

db30075

Package : 100μL

Product Name : Myelin Basic Protein (BP6087) Rabbit mAb**Cat.No.:** db30075**Synonyms** : MBP**Application** : IHC, WB**Reactivity** : Human**Host species** : Rabbit**Background**

Myelin basic protein (MBP) is the second most abundant protein in central nervous system (CNS) myelin: it comprises 30% of the total protein and about 10% of the dry weight of myelin. It is the only structural protein found so far to be essential for formation of CNS myelin, and has been called the 'executive molecule of myelin'.

Immunogen

Synthetic peptide corresponding to residues within aa150-250 of Myelin Basic Protein was used as an immunogen

Swiss Prot

P02686

Synonyms

MBP

Reactivity

Human

Application

IHC, WB

Recommended dilution

IHC: 1:100-1:200

Calculated MW

14~22 kDa

Host species

Rabbit

Clonality

Monoclonal

Clonality No.

BP6087

Isotype

IgG

Purity

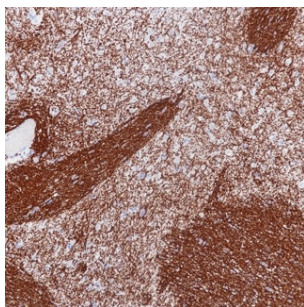
Affinity Purification

Conjugation

Un-conjugated

Storage Stability

Store at -20°C. Supplied in 50mM Tris-Glycine(pH 7.4), 0.15M NaCl, 40% Glycerol, 0.01% sodium azide and 0.05% BSA. Stable for 12 months from date of receipt.



Immunohistochemistry of paraffin-embedded human brain using Myelin Basic Protein antibody at dilution of 1:200 (200x lens).